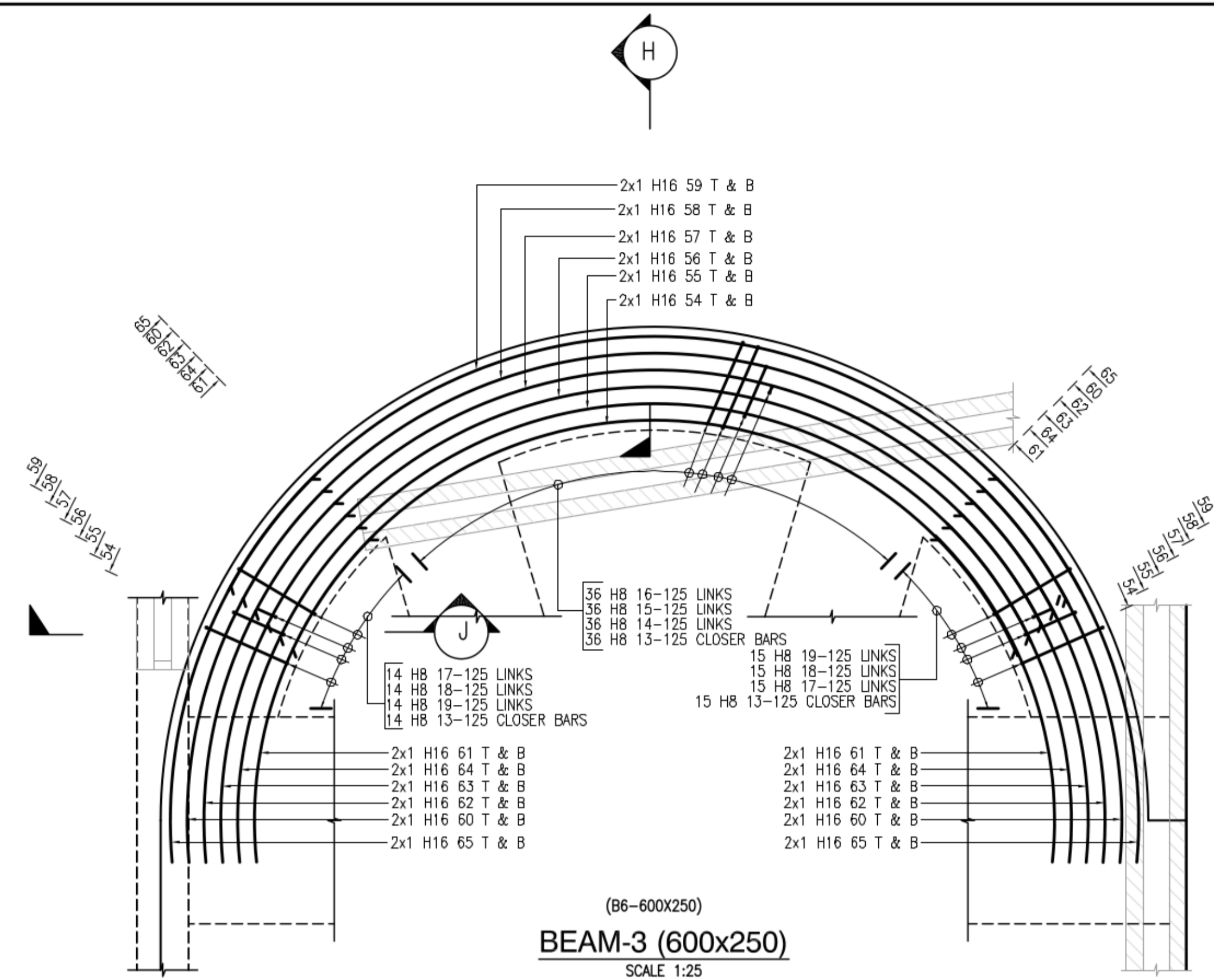
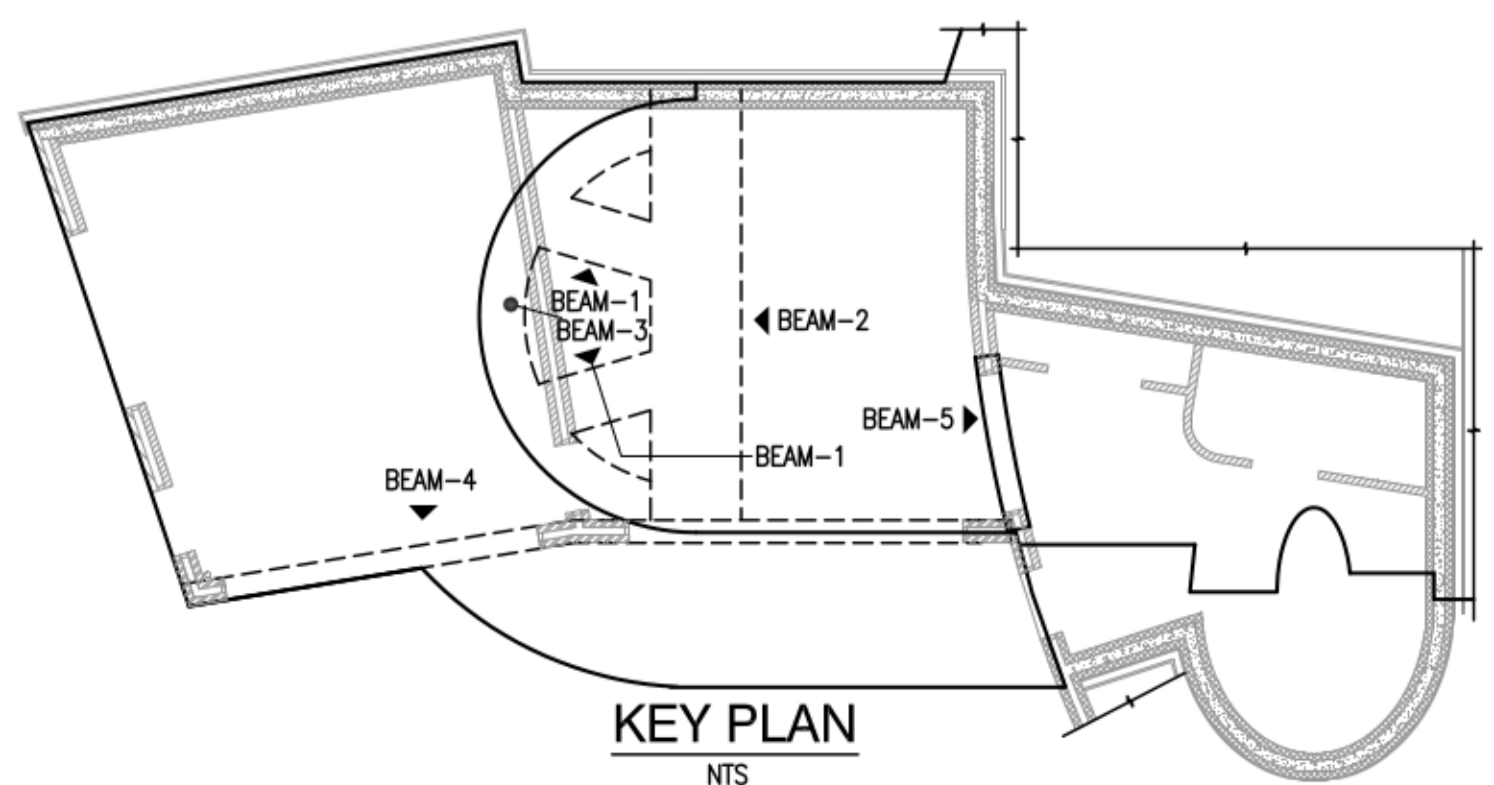
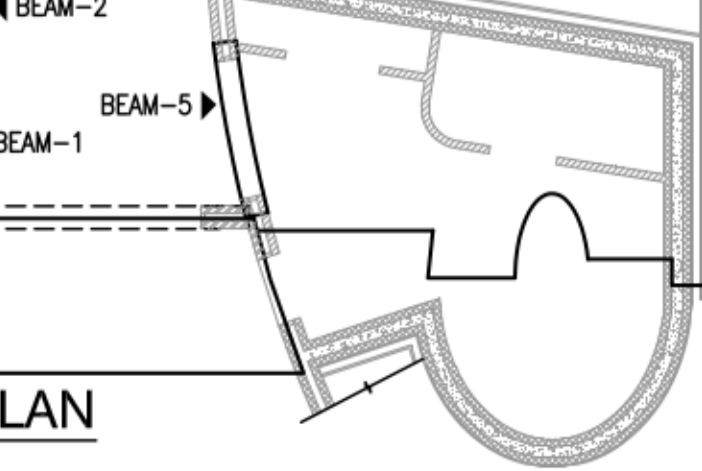
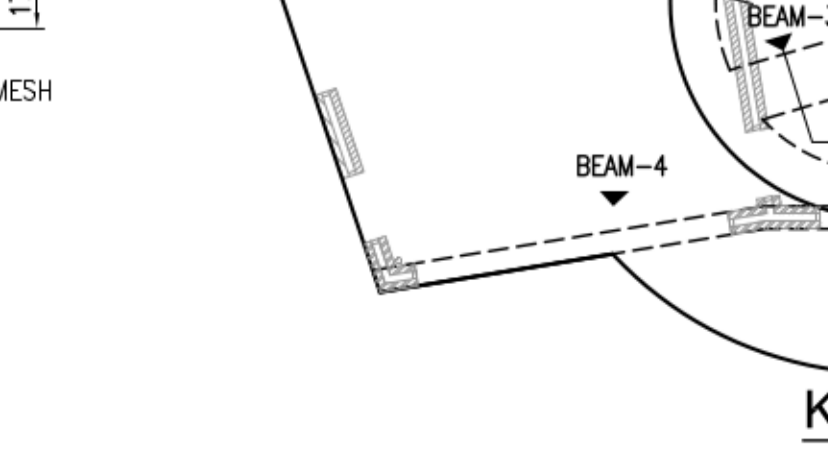
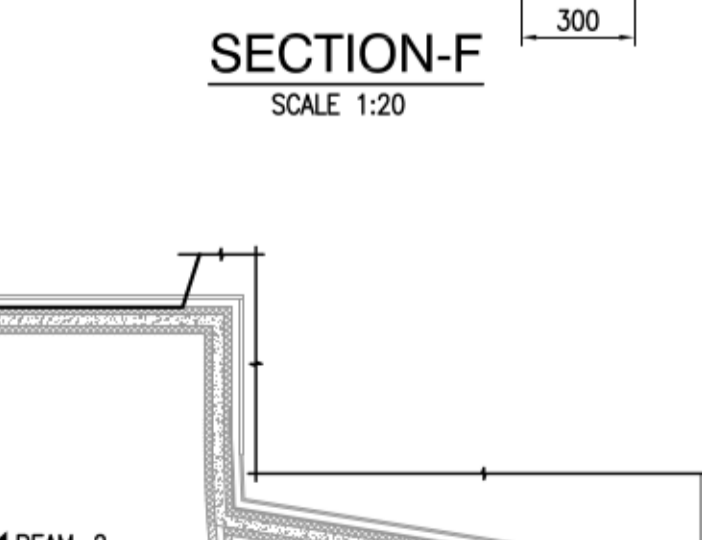
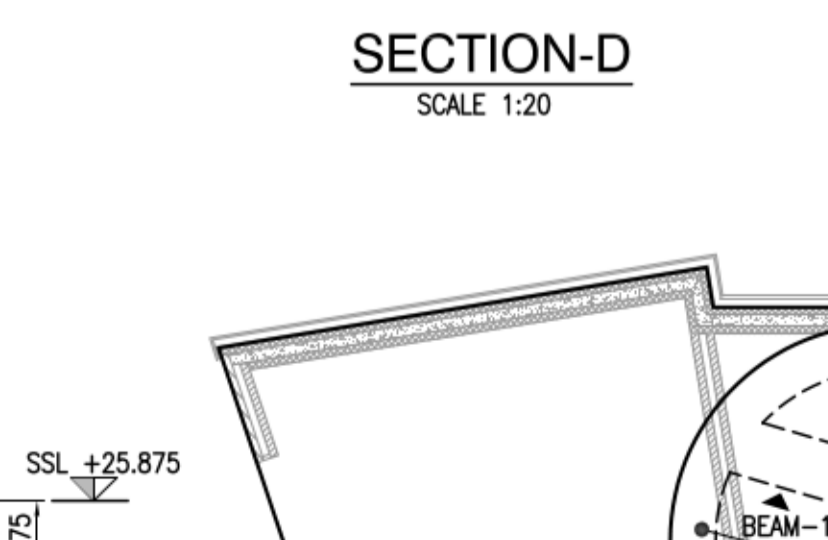
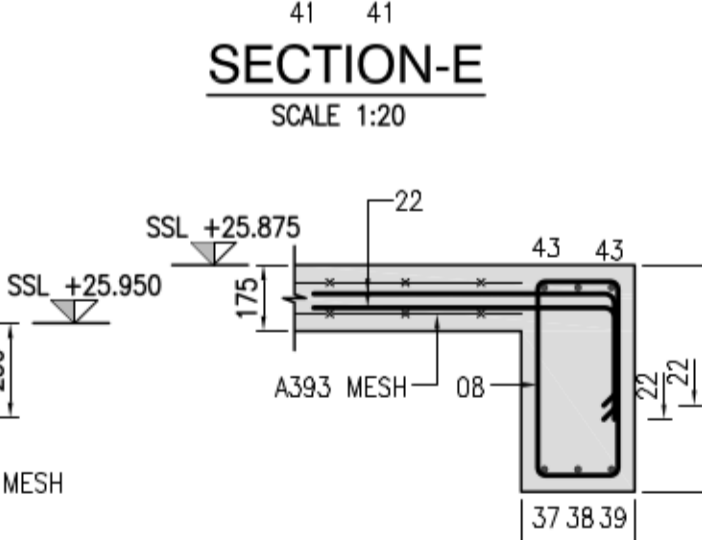
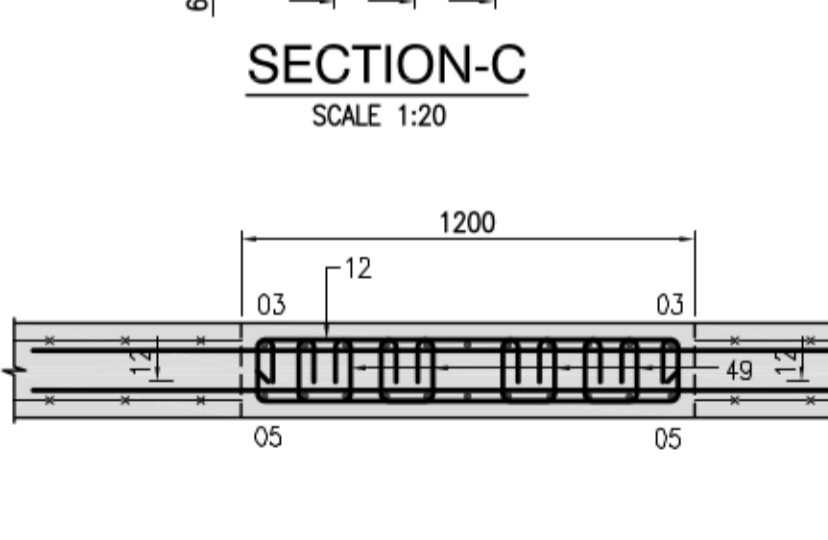
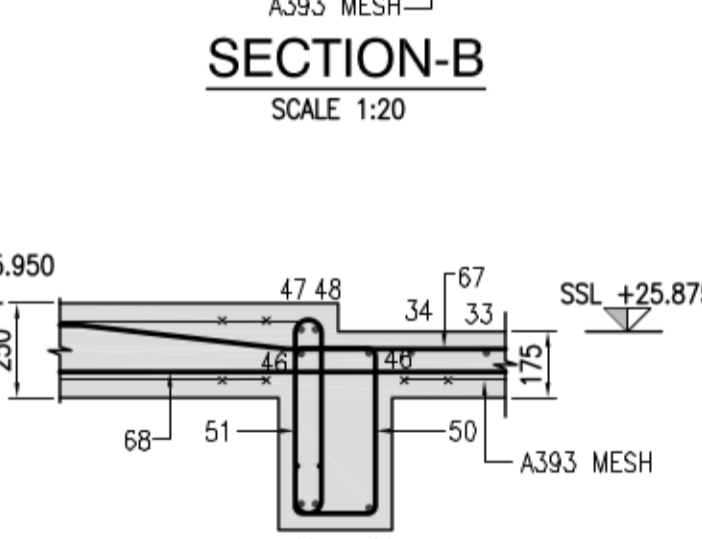
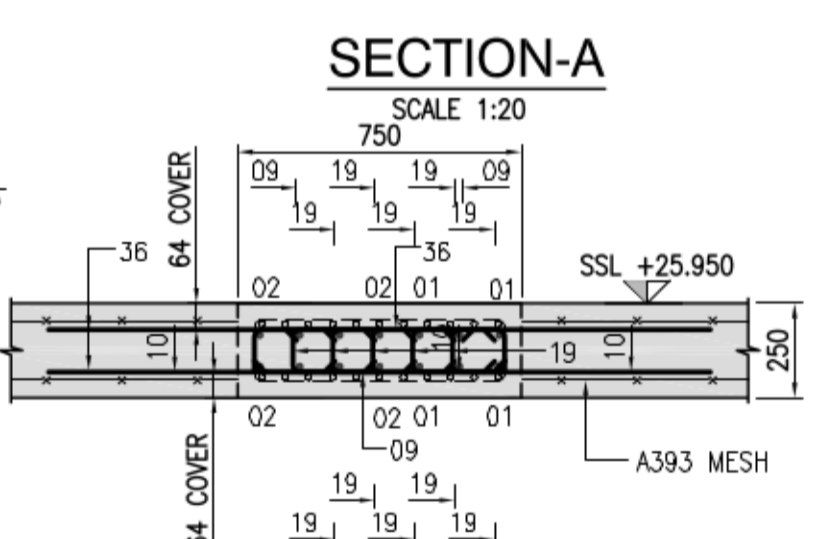
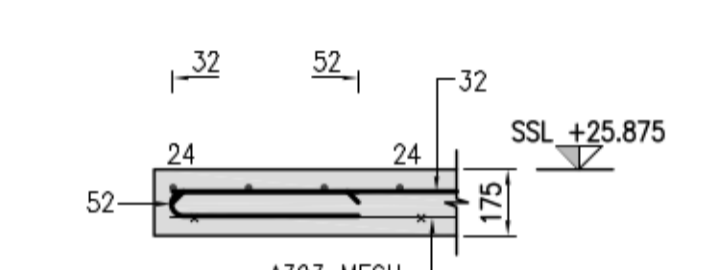
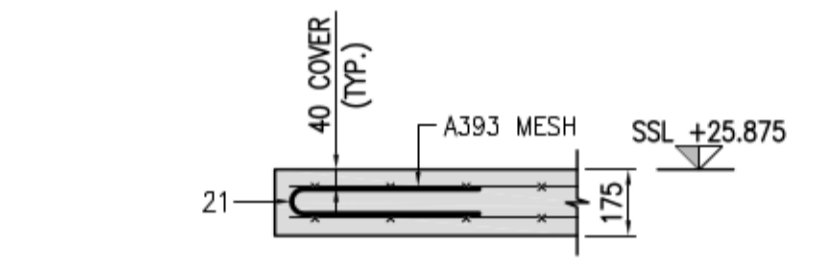
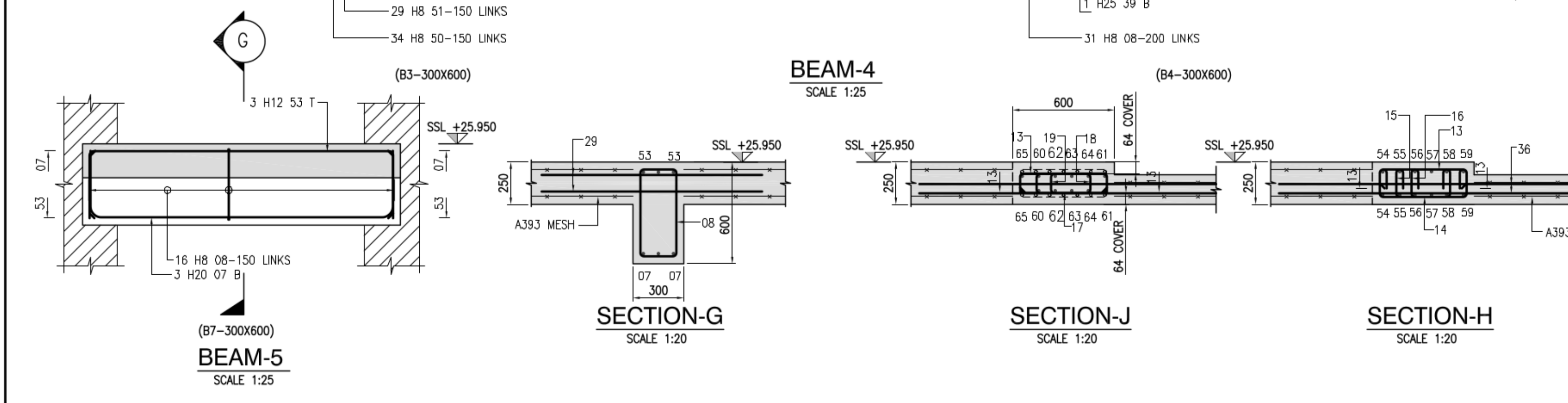
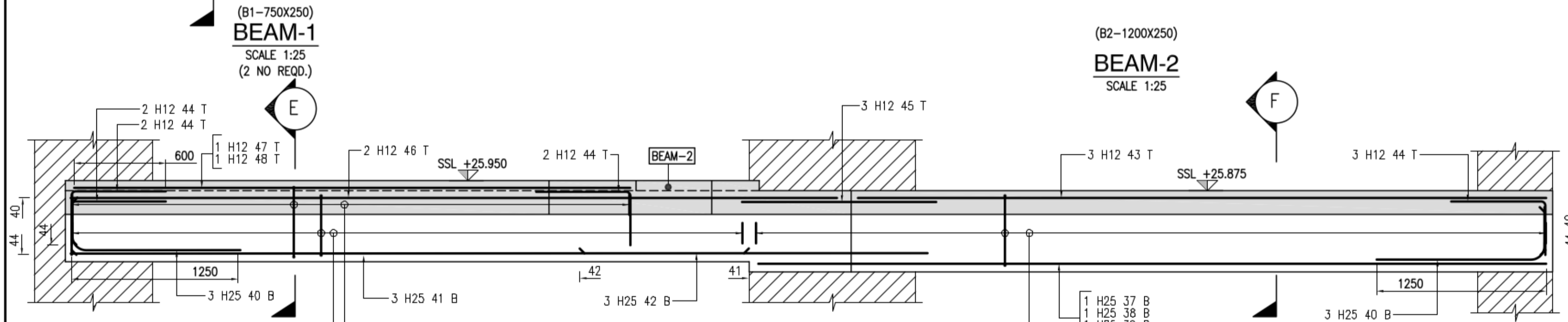
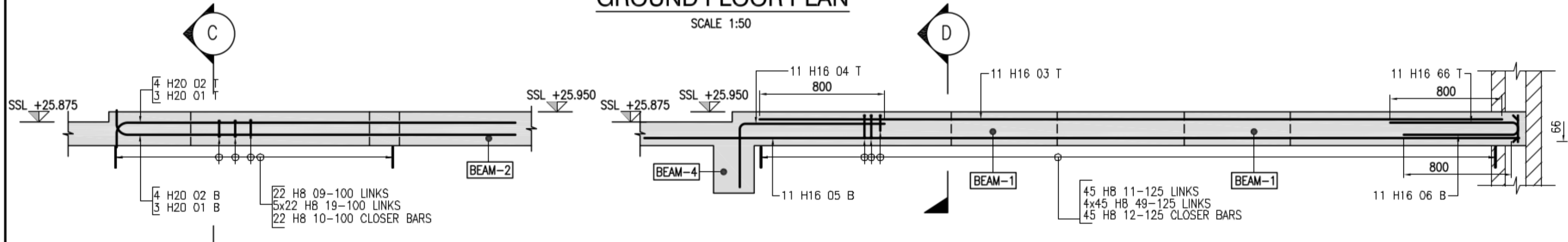


GROUND FLOOR PLAN
SCALE 1:50



BEAM-3 (600x250)
SCALE 1:25



- GENERAL NOTES**
- DO NOT SCALE FROM DRAWING. ALL DIMENSIONS ARE TO BE READ OR CALCULATED.
 - DIMENSIONS ARE GIVEN IN MILLIMETERS AND LEVELS IN METRES.
 - CONCRETE GRADE = RC32/40
 - CLEAR CONCRETE COVER: ALL SIDES - 40mm
 - ALL WORK TO COMPLY WITH THE RELEVANT BRITISH STANDARDS, CODES OF PRACTICE AND THE BUILDING REGULATIONS.
 - REINFORCEMENT ON THIS DRAWING IS LISTED ON SCHEDULES NUMBERED 11175/100/01 TO 04
 - UNLESS NOTED OTHERWISE ON THIS DRAWING, THE REINFORCEMENT SHALL BE GRADE 500, TYPE 2 DEFORMED BARS TO BS4449 CUT AND BENT IN ACCORDANCE WITH BS8666-2005 AND THE BAR SCHEDULES.
 - U.N.O MINIMUM LAP LENGTHS:-
 - H10 - 500mm
 - H12 - 600mm
 - H16 - 800mm
 - H20 - 1000mm
 - H25 - 1250mm
 - H32 - 1600mm

- LEGEND**
- T1 : TOP FIRST LAYER
 - T2 : TOP SECOND LAYER
 - B1 : BOTTOM FIRST LAYER
 - B2 : BOTTOM SECOND LAYER
 - T&B : TOP & BOTTOM
 - SF : SIDE FACE
 - SSL : STRUCTURAL SLAB LEVEL
 - TOC : TOP OF CONCRETE
 - U.N.O : UNLESS NOTED OTHERWISE
- TYPICAL REBAR CALL UP**
- 3X10 H25 01-100
- SPACING OF BAR
 - BAR MARK REFERENCE
 - DIA OF BAR
 - GRADE OF STEEL (GRADE 500)
 - QUANTITY OF BAR
 - MULTIPLES

P1	Preliminary Issue	21.03.12	MCS
REV	DESCRIPTION	DATE	BY
Status			
PRELIMINARY ISSUE			
Client			
Job Title			
Drawing Title			
RC DETAILS OF GROUND FLOOR SLAB & DOWNSTAND BEAMS			
Scale	1:50 & 1:20 @ A1	Date	March 2012
Drawn	MCS	Checked	RBR
		Approved	
Dwg. No.	11175/100	Rev.	P1