



# CADS Masonry Wall Panel Designer MAX

## Release Notes



## Contents

Release Notes .....	1
Version 2.11 (Build 200): March 2017 .....	1
Corrections made:.....	1
Version 2.10 (Build 193): November 2016.....	2
Enhancements: .....	2
Version 2.05 (Build 175): September 2015.....	2
Enhancements: .....	2
Version 2.04 (Build 172): November 2014.....	3
Corrections made:.....	3
Version 2.03 (Build 150): May 2014.....	3
Enhancements: .....	3
Corrections made:.....	3
Version 2.02 (Build 143): June 2013 .....	4
Corrections made:.....	4
Version 2.01 (Build 128): June 2012 .....	4
Corrections made:.....	4
Version 2.0 (Build 79): June 2011 .....	4
Enhancements: .....	4
Corrections made:.....	4
Version 1.04 (Build 54): September 2010.....	5
Enhancements: .....	5
Version 1.03 (Build 51): November 2009.....	5
Corrections made:.....	5
Version 1.02 (Build 48): April 2009 .....	5
Enhancements: .....	5
Corrections made:.....	6
Version 1.01 (Build 42): December 2007 .....	6
Enhancements: .....	6
Corrections made:.....	6
Version 1.0 (Build 29): August 2006.....	6
Post-installation notes .....	6



## Release Notes

Thank you for upgrading to the latest version of CADS Masonry Wall Panel Designer MAX.  
These release notes summarise the enhancements and corrections made.

### Version 2.11 (Build 200): March 2017

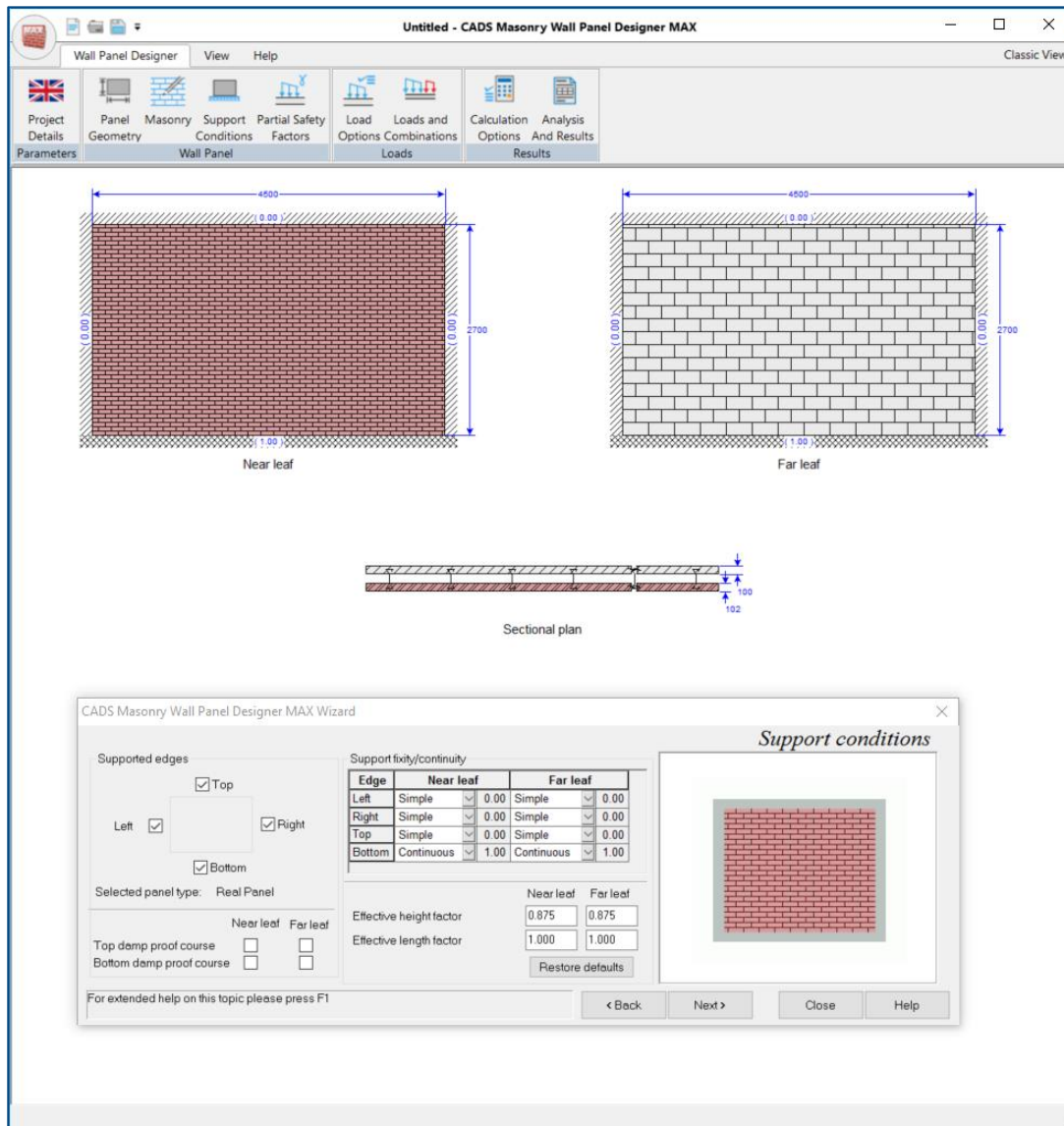
#### Corrections made:

1. In cases where an opening is immediately adjacent to the left or right edge of the wall panel, the least section area was incorrectly calculated as zero leading to an infinite (garbage) result for utilisation in the EC6 minimum area check. This has been fixed.
2. An issue with the calculation of lateral load capacity limited by cracking with bed joint reinforcement has been fixed.
3. A spurious warning message which appeared if the lateral load capacity was not limited by the specified maximum enhancement for bed joint reinforcement has now been removed.
4. Previously the current user was not permitted to change the masonry unit, if the user defined masonry unit was not available in the current library because it was imported from another computer. Now a warning message has been added and the user is allowed to choose a unit from the library or specify a new user defined unit.
5. An issue with the calculation of design reactions on ties and wall tie resistances has been fixed whereby the factor allowing for panel openings is now applied so as to increase the required resistance (reaction force in kN/m) rather than to decrease the calculated resistance of the ties provided.
6. Calculation changes have been made to ensure that the minimum eccentricity is being applied when the BS version is being used.
7. The software now allows the user to define more than one load category for lateral pressure and lateral line loads so as to be consistent with wind loads. Previously all lateral pressure loads were assigned to one category and all lateral line loads were assigned to one category.

## Version 2.10 (Build 193): November 2016

### Enhancements:

CADS Masonry Wall Panel Designer MAX now features a modern task-oriented easy-access ribbon interface of familiar tools and commands with brand new icons and tool tips. The classic menus and toolbars are still optionally available for those who prefer to continue using them.



## Version 2.05 (Build 175): September 2015

### Enhancements:

1. CADS Masonry Wall Panel Designer MAX is now compatible with Microsoft Windows 10.

## Version 2.04 (Build 172): November 2014

### Corrections made:

8. A spurious warning message in the EC6 option has been removed relating to the use of uncracked section analysis for walls essential to overall structural stability. Instead, the enhancement of apparent flexural tensile strength due to vertical compressive load is no longer allowed in this case as required by the 2012 amendment to EC6.
9. The EC6 calculations have been amended to implement clause 6.3.4 Note 1: “The flexural strength of masonry  $f_{xk1}$  [vertical span] should not be used in the design of walls subject to lateral earth pressure.
10. An issue has been fixed whereby in the bed joint reinforcement input page for a cavity wall with both leaves reinforced and far leaf specified to be the same as the near leaf, the far leaf spacing was not updated to agree with change in the near leaf spacing.
11. An issue with the material partial safety factors not changing as expected when the stability risk category was changed has now been fixed.
12. An issue has been fixed whereby no vertical load capacity results were available for a load combination without lateral/wind loading if one or more other load combinations had failed in lateral load capacity.
13. Various other minor corrections and clarifications have been made to the calculations, text and help files.

## Version 2.03 (Build 150): May 2014

### Enhancements:

1. The software has been updated to implement the relevant changes from the 2012 amendments to EC6 and the corresponding UK National Annex.

### Corrections made:

1. A calculation results refresh issue with the ‘select and check the wall ties’ option has been fixed.
2. The calculation of the panel edge reaction was wrong in a customer job. This has been fixed.
3. A crash occurred while clicking on the effective height calculation detail button. This has been fixed.

## Version 2.02 (Build 143): June 2013

### Corrections made:

1. An error in the Euro code version of calculations for the lever arm factor and resistance moment based on reinforcement tension has been corrected.

## Version 2.01 (Build 128): June 2012

### Corrections made:

1. Default effective height factors for certain support conditions have been corrected.
2. Changing the vertical load unit option did not change the units shown in Loads applied. This is fixed now.
3. During the upgrade process for implementing EC6, changes were made to the loads and combinations which have resulted in only one line load category being available per calculation. This is fixed now.

## Version 2.0 (Build 79): June 2011

### Enhancements:

1. CADS Wall Panel Max designer has been enhanced to support EC 1996-1-1: 2005. User can now choose to design to Eurocode or British Standard. The Euro code option comes with preset UK national annex parameters. EN default parameters may also be selected and edited for other national parameter sets.
2. Serviceability cracking check for wall panels with bed joint reinforcement is supported as per Annex A6 of BS 5628-2.
3. When 'uncracked' section analysis is selected, the software will now calculate vertical load capacity based on the 'uncracked' assumption instead of the 'cracked section' assumption per Annex B of BS 5628-1.
4. The treatment of 'other vertical loads' has been simplified and clarified.

### Corrections made:

1. Default effective height factors for certain support conditions have been corrected.

## Version 1.04 (Build 54): September 2010

### Enhancements:

1. CADS Masonry Wall Panel Designer Max is made compatible with Microsoft Windows 7.

## Version 1.03 (Build 51): November 2009

### Corrections made:

1. The format of user defined masonry files created in version 1.02 was different from files created in earlier versions. The incompatibility has been resolved.

## Version 1.02 (Build 48): April 2009

### Enhancements:

1. The calculation of the resistance moment of sections with bed joint reinforcement has been refined to allow for hollow concrete blockwork which has definable void dimensions. The default characteristic compressive strength parallel to the bed joints has been modified for this type of unit and made editable.
2. A new 'Warnings / Advice notes' tab has been added to the 'Analysis & Results' page to display useful warnings and advice notes related to input parameters and design calculations.
3. The minimum range of masonry panel height has been reduced from 1000mm to 100mm to enable designing lesser height masonry panels.
4. Masonry unit product library has been updated as per BS EN 771-4 and block manufacturers' literature.
5. The check boxes for the options 'Vertical load capacity check' and 'Include eccentricity due to slenderness' in the 'Calculation options' page were selected by default. These are now unselected by default to ease checking of non-load bearing panels.
6. The construction and manufacturing control categories in the 'Safety options' tab namely 'Normal' and 'Special' have been renamed as 'Category II (normal)' and 'Category I (special)' for better clarity and consistency with BS 5628-1:2005 table 4.
7. In the results summary tab the display order of vertical load results has been changed so that it now displays after the lateral load results. If the panel has failed in lateral load capacity no results for vertical load capacity are reported now.

## Masonry Wall Panel Designer MAX Release Notes

### Corrections made:

1. An error in the reporting of panel bending parameters and moment coefficients when bed joint reinforcement was specified has been corrected. The capacity results were correct.

## Version 1.01 (Build 42): December 2007

### Enhancements:

1. CADS Masonry Wall Panel Designer MAX is made compatible with Microsoft Windows Vista.
2. CADS SMART Designer Launcher has been replaced with a new CADS System Design Launcher bringing all CADS structural analysis and design products together.

### Corrections made:

1. The minimum value of range for panel height is revised from 1000 mm to 100 mm.
2. A crash occurred while printing the summary report in a job created out of single leaf template modified to cavity wall. This has been corrected.
3. In 'Wall ties -> Panel edge -> Support via other leaf' input there was only two options viz. No/Yes and Yes/No. Now another option No/No is added.
4. When the Calculation option 'Treat long 2-way panels as 1-way for limiting dimensions' is ticked, the limiting dimension for a 1-way panel with continuous support at top and bottom is now restricted to 50 times the effective thickness in accordance with the Help text based on PSA guidance. Formerly this limit was set to 40 times the effective thickness giving no enhancement over the simply supported case.
5. The lateral load capacity based on shear at left edge of a symmetrical wall with symmetrical loading was wrong. This has now been corrected.

## Version 1.0 (Build 29): August 2006

1. First release of CADS Masonry Wall Panel Designer MAX

### Post-installation notes

Once you have installed CADS Masonry Wall Panel Designer MAX, it must still be authorised before it can be used. The procedure is the same for stand-alone and network installations. For network installations, you should ensure you have the necessary permissions to write to and create directories on your server drive before starting.

To start CADS Masonry Wall Panel Designer MAX, select the CADS System - Analysis, Modelling & Design' icon from the Desktop or 'CADS' program group (Start->Programs) and then click on the 'Wall





## Masonry Wall Panel Designer MAX Release Notes

Panel Designer MAX' button from the 'Masonry' tab. If the program is not authorised the licence manager will be invoked automatically, through which the licence can be requested.

At any time, a licence can be requested by pressing the "Licensing Wizard..." button and the application can be licensed by pressing the "Enter/Import Licence Codes..." button of the CADS Licence Manager.

For details refer to the CADS Licence Manager help.

If you have any questions about this procedure, please contact our Technical Support Department who will be happy to help.

Technical support and authorisation codes:

Telephone: +44 (0)1202 603733

Email (Support): [support@cadsw.co.uk](mailto:support@cadsw.co.uk)

Other useful addresses are:

Email (Sales): [sales@cadsw.co.uk](mailto:sales@cadsw.co.uk)

Website: <http://www.cadsw.co.uk>

Fax.: +44 (0)1202 658549

