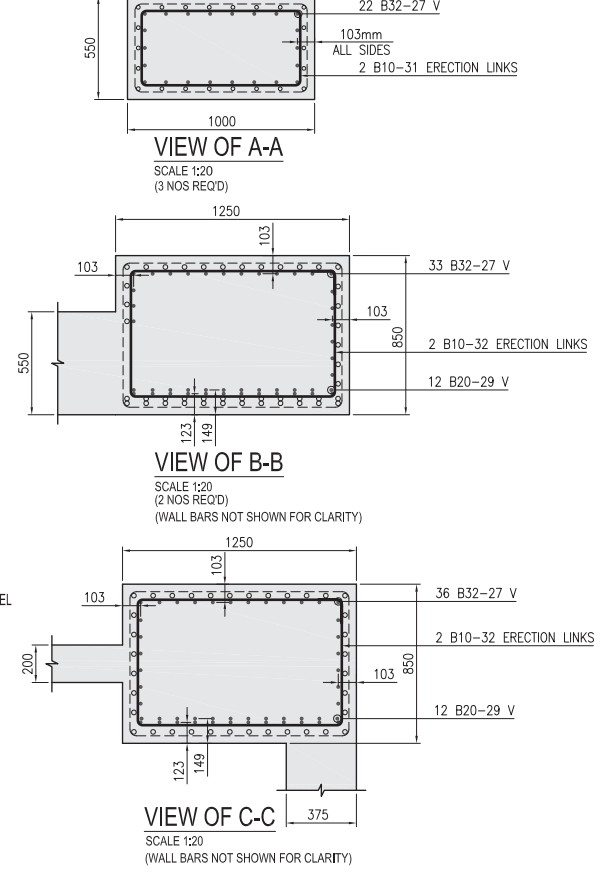
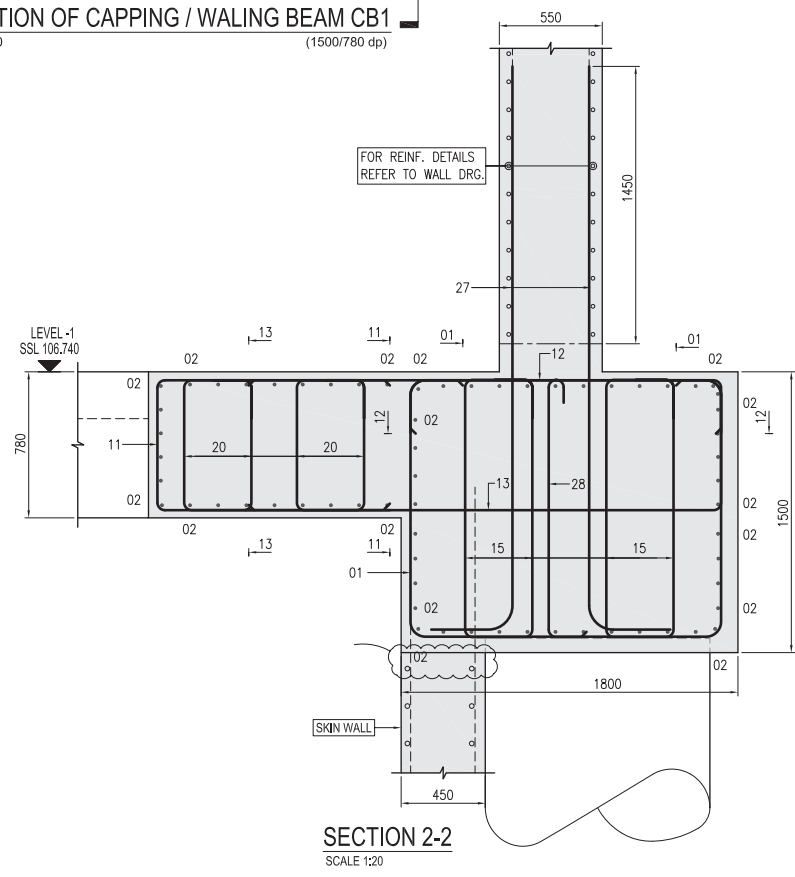
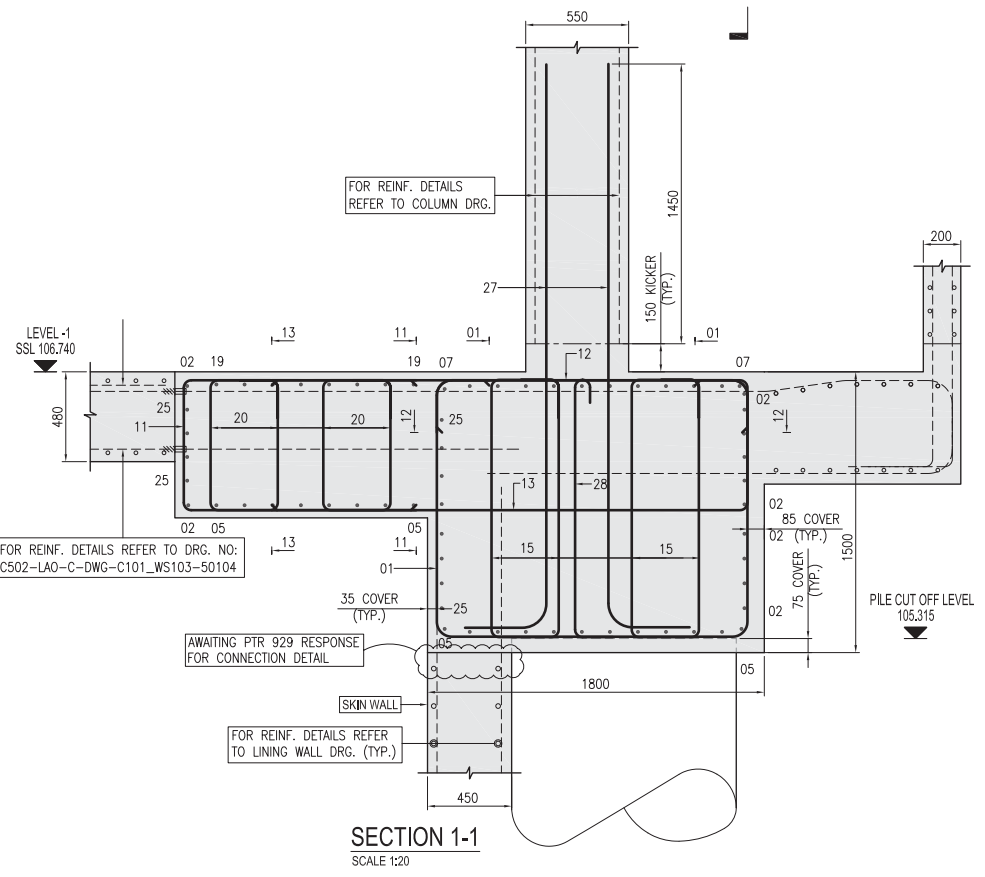
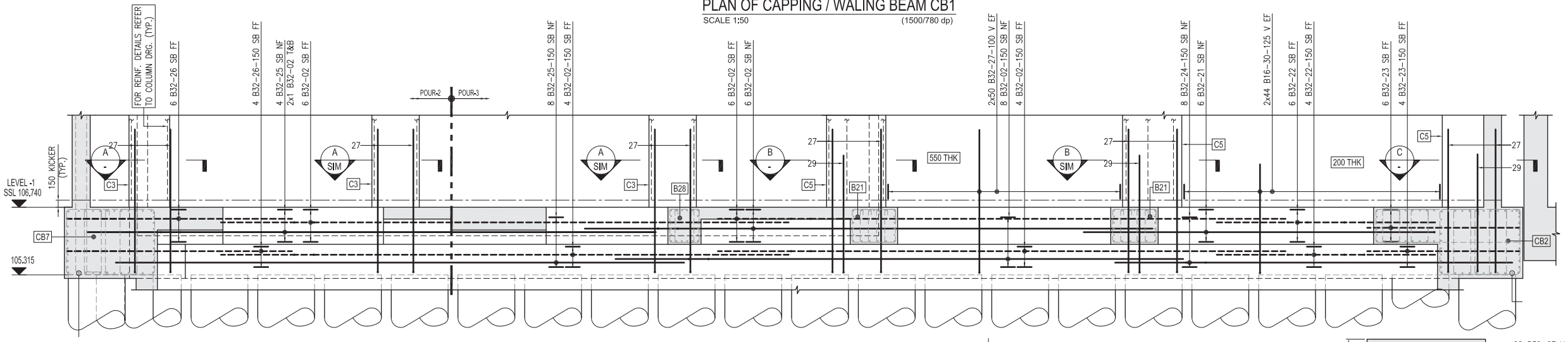
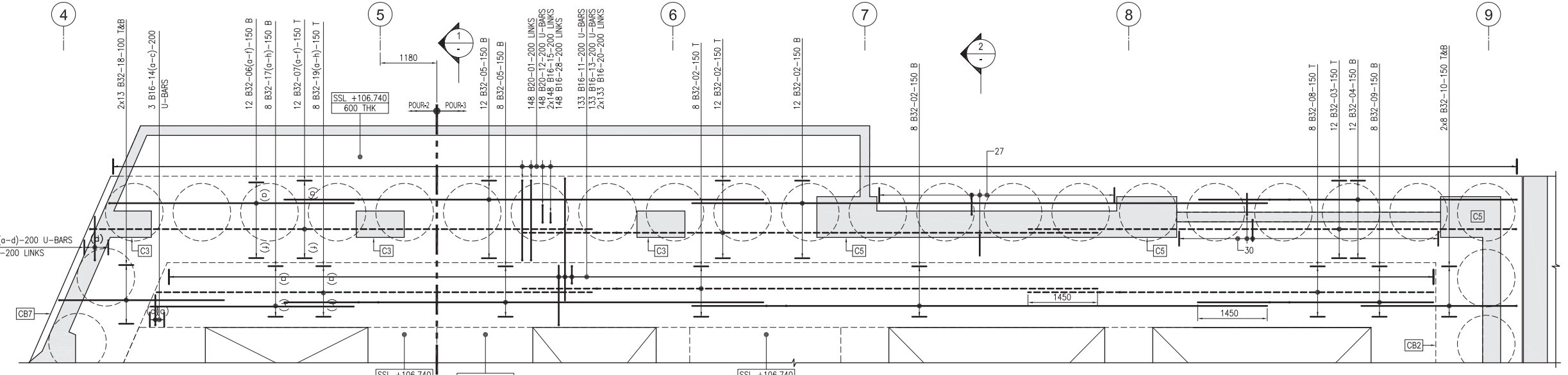


- NOTES:**
- 1) ALL DIMENSIONS ARE IN mm AND LEVELS ARE IN METRE UNO
  - 2) THIS DRAWING IS TO BE READ IN CONJUNCTION WITH ALL OTHER RELEVANT DRAWINGS, ANY DISCREPANCIES TO BE BROUGHT TO THE ATTENTION OF THE RELEVANT ENGINEER
  - 3) CONCRETE TO BE OF GRADE C40/50
  - 4) DEFORMED HIGH YIELD STEEL BARS SHALL BE 500 MPa
  - 5) CONCRETE COVER OF REINFORCEMENT TO BE:-  
Onom INTERNAL FACE 35mm & EXTERNAL FACE 85mm
- 7) LAP LENGTH FOR REINFORCEMENT (LNO)  
 B12 = 550mm, B16 = 725mm, B20 = 900mm,  
 B25 = 1125mm, B32 = 1450mm, B40 = 1800mm
- LEGEND:**
- 3X10 B32-01-100
- V = VERTICAL  
 H = HORIZONTAL  
 NF = NEAR FACE  
 FF = FAR FACE  
 EF = EACH FACE  
 SB = SIDE BARS  
 SSL = STRUCTURAL SLAB LEVEL  
 BOC = BOTTOM OF CONCRETE  
 TOB = TOP OF BEAM  
 CJ = CONSTRUCTION JOINT

<b>REBAR TONNAGE</b> (INCLUDING COUPLER BAR)	28.933 T
---	----------



RC DETAILS OF CAPPING BEAMS TO 1200 DIA PILES (SHEET 01)