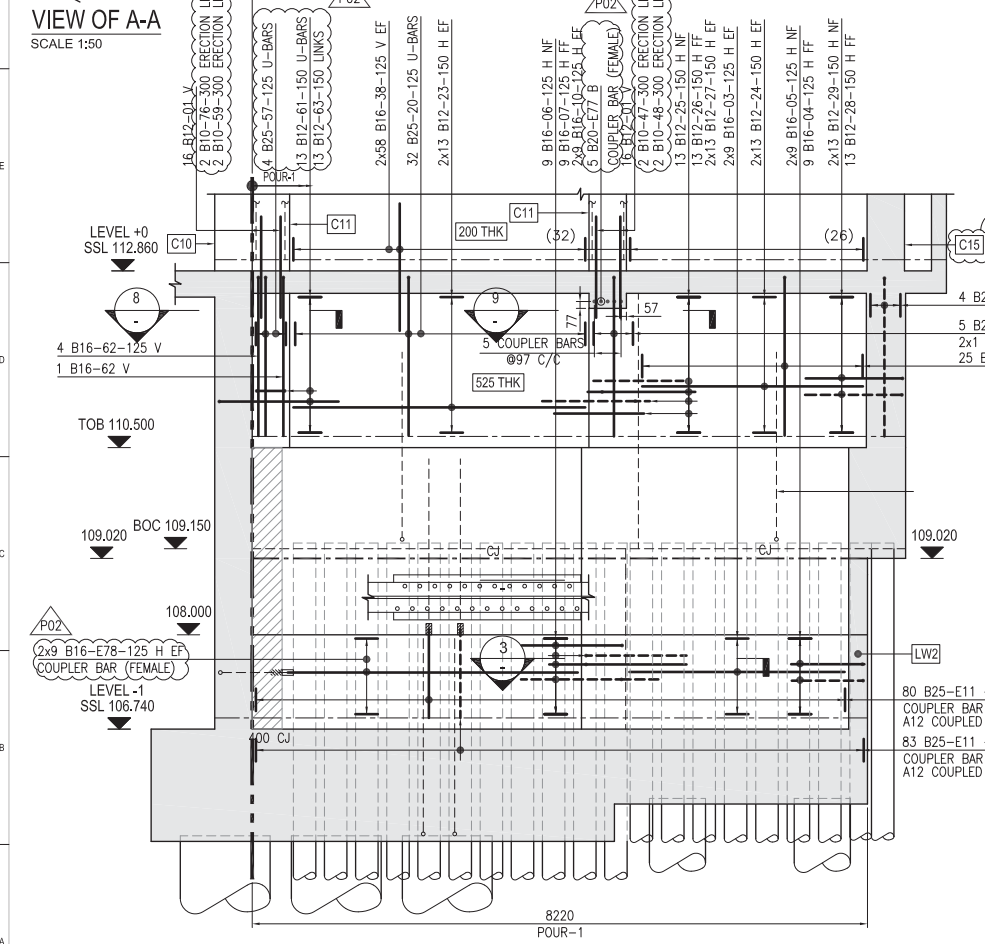
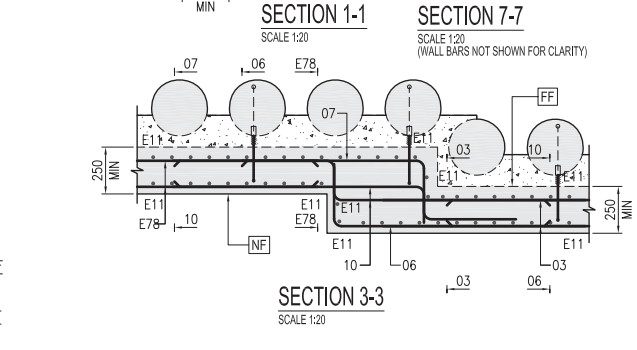
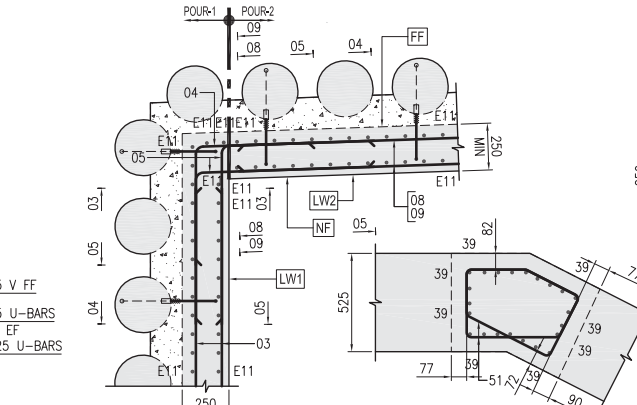


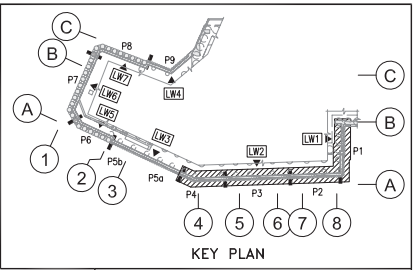
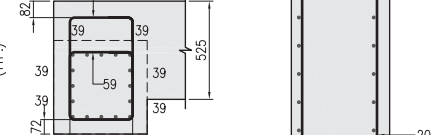
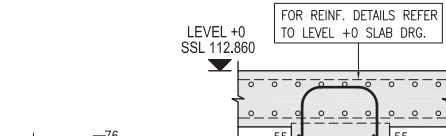
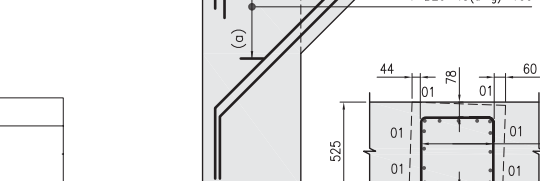
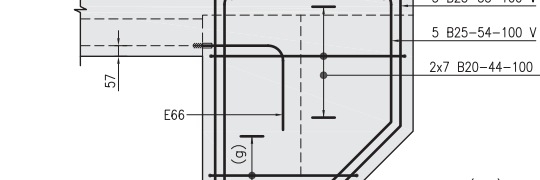
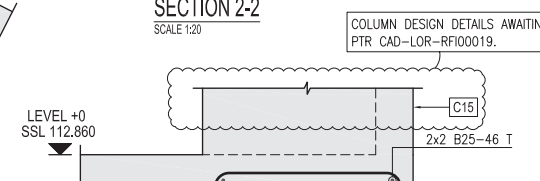
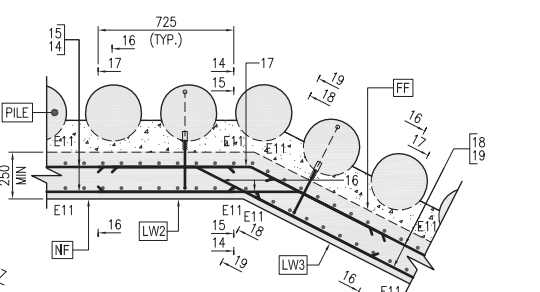
ELEVATION OF LINING WALL LW2 & LW3
SCALE 1:50 (POUR 01 TO 04)



ELEVATION OF LINING WALL LW1
SCALE 1:50 (POUR 01)



PILE CAGE COUPLER TABLE		
PILE CAGE TYPE	NO OF PILE	REINFORCEMENT
TYPE A1 (POUR-2)	10	10x2 B12-E12 COUPLER BAR (MALE)
TYPE A1 (POUR-3)	13	13x2 B12-E12 COUPLER BAR (MALE)
TYPE A1 (POUR-4)	9	9x2 B12-E12 COUPLER BAR (MALE)
TYPE A3 (POUR-1)	10	10x2 B12-E12 COUPLER BAR (MALE)



- NOTES:**
- 1) ALL DIMENSIONS ARE IN mm AND LEVELS ARE IN METRE UNO
 - 2) THIS DRAWING IS TO BE READ IN CONJUNCTION WITH ALL OTHER RELEVANT DRAWINGS, ANY DISCREPANCIES TO BE BROUGHT TO THE ATTENTION OF THE RELEVANT ENGINEER
 - 3) CONCRETE TO BE OF GRADE C40/50
 - 4) DEFORMED HIGH YIELD STEEL BARS SHALL BE 500 MPa
 - 5) CONCRETE COVER OF REINFORCEMENT TO BE:-
Crom INTERNAL FACE 35mm & EXTERNAL FACE 55mm

- 7) LAP LENGTH FOR REINFORCEMENT (LNO)
B12 = 550mm, B16 = 725mm, B20 = 900mm, B25 = 1125mm, B32 = 1450mm, B40 = 1800mm
- LEGEND:**
3x10 B32-01-100
V = VERTICAL
H = HORIZONTAL
NF = NEAR FACE
FF = FAR FACE
EF = EACH FACE
SB = SIDE BARS
SSL = STRUCTURAL SLAB LEVEL
BOC = BOTTOM OF CONCRETE
TOB = TOP OF BEAM
CJ = CONSTRUCTION JOINT

REBAR TONNAGE
(INCLUDING COUPLER BAR) **11.447 T**

RC DETAILS OF LINING WALL TO 300 DIA PILES (SHEET 01)