



CADS RC
World Class Rebar Software

CASE STUDY

Wheatstone House, Chiswick, London, UK



THE PROJECT

Wheatstone House is an 8 storey mixed use development consisting of 95 residential apartments and commercial space as well as ground floor and basement parking. The development is located between Chiswick and Brentford town centre and is close to Kew Bridge and Chiswick Park. The original Wheatstone House was a BT telephone exchange which was demolished to make way for this development. The original building had been empty since 2009 and planning permission for the site was secured in March 2015. Work began on the development in December 2016 and is scheduled for completion towards the end of 2018.

TULLY DE'ATH

Tully De'Ath engaged CADS to provide all the reinforced concrete detailing for the Wheatstone development. The location and nature of the development mean it presents some significant challenges. The new development is being constructed on a site which is restricted by a nearby petrol station on one side and by a BT duct which services the Chiswick region. The structure of the build is around a horseshoe design and in the words of the architects will "create a stronger visual statement on Chiswick High Road." The plans include some challenging

design features such as cantilever elements so the involvement of experienced draftsmen working with world leading software is crucial to produce the detailed and accurate drawings required to ensure the development runs smoothly.

The drawings are all being produced by CADS team of detailers using CADS RC software and Revit. All the work is coordinated and managed by a member of the CADS UK team. This means that the client has a local contact to liaise with who understands the work and is available to respond to queries while ensuring there is continuity and smooth communications throughout the project.

By outsourcing the reinforced concrete detailing to CADS, Tully De'Ath are able to ensure project deadlines are met whilst retaining quality.

ABOUT CADS RC DETAILING SERVICES

CADS has established an enviable reputation for providing expert RC detailing services to consulting engineers, RC frame contractors and rebar fabricators in the UK, UAE and North America. CADS uses its own market leading CADS RC and RebarCAD software to detail more than 2000 drawings per month. With a large team of experienced detailers CADS has the capability to meet urgent project deadlines without compromising drawing presentation or technical accuracy as has been demonstrated on this particular project.

"With the ever increasing scale and demands of concrete structured buildings being delivered by our practice we're pleased to have built strong working relationships with the CADS teams, ultimately this has allowed greater flexibility and volume of production of RC drawings, whilst retaining quality and reliability."

**Peter Tully, Associate Director
Tully De'Ath**

CADS CUSTOMER:

Tully De'Ath

DEVELOPER:

L&Q

LOCATION:

Chiswick, London

DURATION OF PROJECT:

2 years

NUMBER OF DETAILED DRAWINGS:

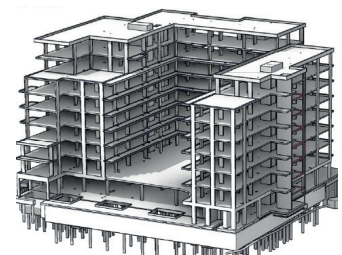
Approx. 160

SCHEDULED COMPLETION DATE:

December 2018

REINFORCING STEEL USED:

Approx. 700 tonnes



GLOBAL CONSTRUCTION
SOFTWARE AND SERVICES



Microsoft Partner
Authorised Developer Gold Application Development

sales@cad.s.co.uk
www.cad.s.co.uk