

CADS RC 2022.20

Release Notes



Contents

Release Notes	1
Version 2022.20 [22 Apr 2022]	1
Version 2022.10 [02 Mar 2022]	1
Version 2022.0 [09 July 2021]	6
Version 2021.10 [08 December 2020]	11
Version 2021.0 [05 August 2020]	13
Version 2020.0	20
Version 2019.0	21
Version 2018.1	22
Version 2018.0	25
Version 2017.10	26
Version 2017	27
Version 2016.1	28
Version 2016	31
Version 2015.1	31
Version 2015 Service Pack	32
Version 2015	33
Version 9.12 Service Pack (Build 1819)	33
Version 9.12	33
Version 9.11 Service Pack (Build 1713)	36
Version 9.11	36
Version 9.10	37
Version 9.09 Service Pack (Build 1611)	38
Version 9.09	38
Version 9.08 Service Pack (Build 1548)	39
Version 9.08	40
Version 9.07 Service Pack (build 1498)	41
Version 9.07	41
Version 9.06	42
Version 9.05	42
Version 9.04	43
Version 9.03	44
Version 9.02	45
Version 9.01	46

Release Notes

Thank you for upgrading to the latest version of **CADS RC**.

These release notes summarise the enhancements and corrections that have been made for each release of the product.

Version 2022.20 [22 Apr 2022]

1. AutoCAD Support

CADS RC 2022.20 supports the following Autodesk platforms:

AutoCAD Vertical	Supported Versions
AutoCAD	2020, 2021 & 2022
AutoCAD Architecture	2020, 2021 & 2022

2. Update in the Extended features

BS8666:2020 support.

Enhancements have been made to support the BS8666:2020 tolerance rules.

Version 2022.10 [02 Mar 2022]

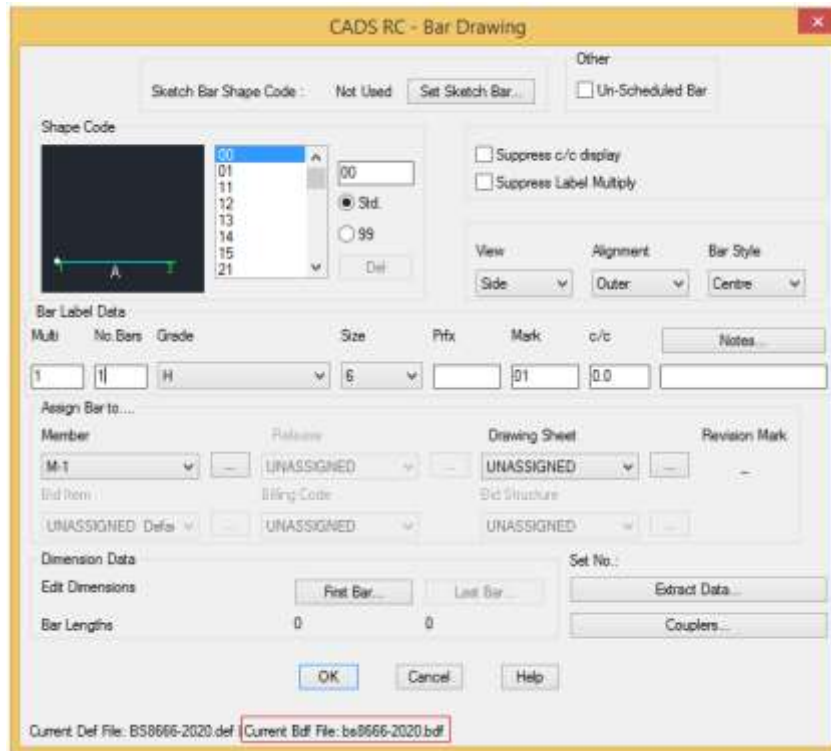
1. AutoCAD Support

CADS RC 2022.10 supports the following Autodesk platforms:

AutoCAD Vertical	Supported Versions
AutoCAD	2020, 2021 & 2022
AutoCAD Architecture	2020, 2021 & 2022

2. Bar Drawing/Edit Bar Label Data dialog

The Bar Drawing and the Edit Bar Label Data dialogs have been enhanced to display the BDF file configured in the drawing as shown below:



3. Title block

Enhancements have been made in the title block configuration to support the attributes for Uniclass standard.

4. BS8666:2020 support

Enhancements have been made in the default schedule on drawing template.

A new schedule on drawing template with dimensioned sketches for BS8666:2020 standard has been supported.

A defect in which the reports customised based on BS8666:2020 standard not working has been fixed.

5. Shape Codes

A defect in which the configured BDF file not being updated after a specific sequence has been fixed.

A defect related to the shape code 01 allowing to edit the bar dimension has been fixed.

A defect related to the shape code 99186 in which it was not allowed to draw a bar with specific dimensions has been fixed.

6. Coupler improvements

Improvements have been made to report the bars attached with the couplers as a 99 shape based on the global configuration;

A new configuration, 'COUPLERBARDISPLAYSHAPE' has been introduced with a default value of 'NO' to maintain the existing workflow.

Once the configuration is set to **YES**, the shape code of the bar will be displayed as the shape code name configured in "SPECIALBARTEXT" global configuration. The default shape code configured in SPECIALBARTEXT is '99'.

A new coupler manufacturer, HALFEN MOMENT has been supported.

Improvements have been made in the ANCON couplers to

- ▶ report the catalogue number with MBT prefix for MBT couplers;
- ▶ report the catalogue number as the manufacturer name for all coupler types except the MBT couplers;
- ▶ support a space in the Catalogue number;

Improvements have been made in the DEXTRA couplers to

- ▶ support the GRIPTEC couplers;
- ▶ support the new coupler types like Connection to structural steel, Pocket forms, Nailing plate and Stainless steel connectors;
- ▶ consider male and female sleeves as a single assembly to maintain catalogue number for the coupler types like Standard, Positional and Transitional;
- ▶ support part number for the coupler types like Bridging, Small headed bars, Large headed bars, Bolted bars and Weldable;

Improvements have been made in the HY-TEN couplers to

- ▶ support the HT.EA Mechanical anchor couplers;

Improvements have been made in the LENTON couplers to

- ▶ report the product description with the diameter and the coupler name;
- ▶ report the product description and the product codes as per the latest product brochures;
- ▶ support the threaded splicing systems;
- ▶ support the new coupler types.

A defect related to the coupler attached to the plan view reporting a warning message during redraw has been fixed;

A defect related to printing the Catalogue number in the accessories list has been fixed;

A defect related to printing the coupler data in the accessories list, on changing the coupler symbol from thread to coupler has been fixed.

A defect related to the previous selection, selecting only the coupler and ignoring the bars after a specific sequence has been fixed.

A defect related to retaining the accessories list after deleting the bar view has been fixed.

A defect related to reporting the coupler details in the accessories list after a specific sequence has been fixed.

A defect related to the coupler position being reported incorrectly in the accessories list after a specific sequence has been fixed.

A defect related to the incorrect 'To Size' set has been fixed.

7. Soule file output (.SLE)

The dialog is enhanced to support the setting of the output filename.

A defect related to updating the existing dialog data after using the Reset option after a specific sequence has been fixed.

8. Soule file output (.XML)

The dialog is enhanced to support the setting of the output filename.

A defect related to updating the existing dialog data after using the Reset option after a specific sequence has been fixed.

9. SteelPAC and Ariadis file output (.SDI)

The dialog is enhanced to support the setting of the output filename.

10. CADS RC file output (.CSF)

The dialog is enhanced to support the setting of the output filename.

A defect related to the product name being missed in the output filename after a specific sequence has been fixed.

A defect related to the number of lines per page getting changed after a specific sequence has been fixed.

A defect in which the number of lines per page was not matching with the configured number of lines after a specific sequence has been fixed.

A defect in which the coupler symbols were reported incorrectly after a specific sequence has been fixed.

A defect in which an incorrect total page number was reported after a specific sequence has been fixed.

11. aSa file output (.CAD)

The dialog is enhanced to support the setting of the output filename.

A defect related to the number of characters in the job number field has been fixed.

A defect in which the existing output file was getting replaced without any warning message has been fixed.

12. aSa file output (.RDX)

The dialog is enhanced to support the setting of the output filename.

A defect related to reporting the EPID and EPCODE in the coupler data has been fixed.

The number of characters for the “placing tag” in the release properties has been increased.

The order materials dialog is enhanced to set multiple control codes when multiple releases are selected for output.

Enhancements have been made to support the purple epoxy in the Coating Id.

Enhancements have been made to support the accessories in the output.

13. Sub release

A defect related to the incorrect filename being reported in the warning message in the order materials dialog after a specific sequence has been fixed.

A defect related to allowing to enter the sub release in the Release dialog, after synchronizing the release status from the external file has been fixed.

A defect in which the releases with sub releases were not being listed when the drawing was saved as the V9.04 format has been fixed.

A defect related to allowing restricted characters in the release number has been fixed.

A defect related to allowing restricted characters in the global configuration to split the sub release has been fixed.

14. Reports

A defect in which the strike out lines were not generated after a specific sequence has been fixed.

A defect related to the customisation of bar schedule report based on “Contemporary BS8666-Uniclass” template has been fixed.

A defect related to the customisation of bar schedule report based on “Contemporary BS8666-2005 with Revision Table” template has been fixed.

15. RC LISP API improvements

A new LISP command, “CADS_RCL_CREATE_RELEASE” has been introduced. This command allows the creation of a new release number and provides the option to set it as the current release number in the drawing.

A new LISP command, “CADS_RC_ACC_REFRESH” has been introduced. This command allows the refreshing of the accessories list on the drawing.

16. CADS Viewport Manager improvements

Enhancements have been made to create new layouts with the ANNOALLVISIBLE variable set to 1.

A defect related to the tooltip not displaying the scale and the layout name in AutoCAD 2022 has been fixed.

17. New generation macros

Enhancements and defect fixes have been made in the following new generation macros:

- ▶ Area Detailer;
- ▶ Show All Bars in Range.

18. Licensing

A defect in which the CADS Software Licence Manager was being closed unexpectedly when clicking the cancel button after a specific sequence has been fixed.

A bug related to licensing the CADS RC/RebarCAD Extended Features enabling the unsupported licensing methods has been fixed.

19. Cloud Licensing

A defect related to the remote session has been fixed.

A defect related to the maximum supported version has been fixed.

A defect related to the code not returning after a specific sequence has been fixed.

A defect in which unlicensing was allowed while the application was open has been fixed.

20. Defect fixes

A defect related to stretching the range after a specific sequence has been fixed.

A defect related to the Management System File (PDF) output, when multipliers were used for tapered ranges after a specific sequence has been fixed.

A defect related to the corruption of configuration files in a specific environment, has been fixed.

A defect related to reporting the BidItemStatId has been fixed.

A defect related to copy & pasting the values in the bid item dialog has been fixed.

A defect in which the CADS Software Licence Manager was not being closed properly after unlicensing has been fixed.

A defect related to returning the floating license after a specific sequence has been fixed.

Version 2022.0 [09 July 2021]

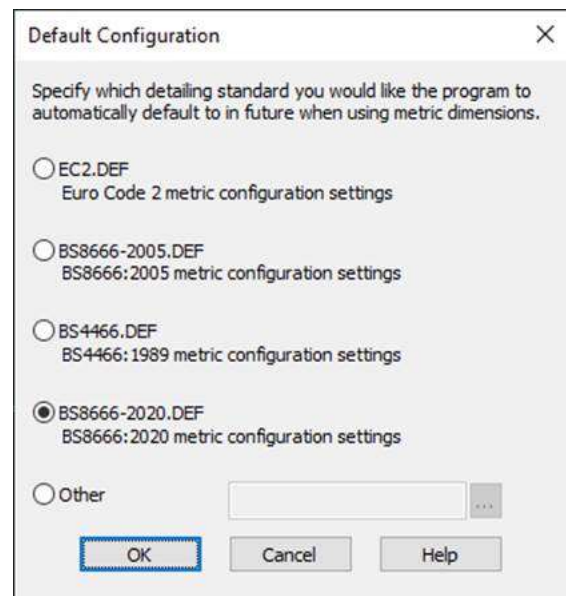
1. AutoCAD Support

CADS RC 2022.0 supports the following Autodesk platforms:

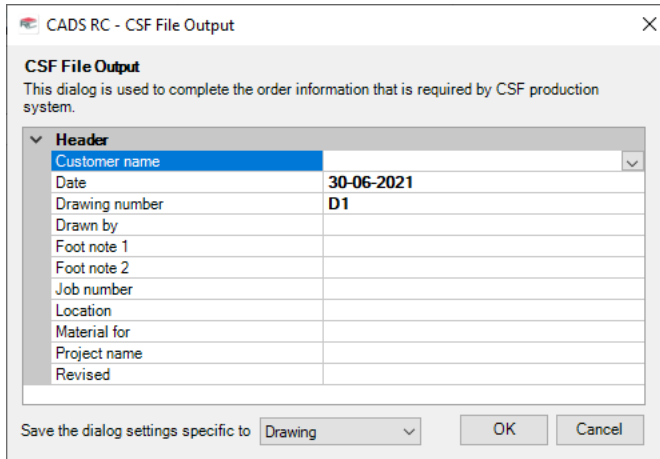
AutoCAD Vertical	Supported Versions
AutoCAD	2020, 2021 & 2022
AutoCAD Architecture	2020, 2021 & 2022

2. BS8666:2020 support

Support for the new detailing standard BS8666:2020 has been introduced into CADS RC.



3. CADS RC file output (.CSF)



CADS RC - CSF File Output

CSF File Output
 This dialog is used to complete the order information that is required by CSF production system.

Header	
Customer name	
Date	30-06-2021
Drawing number	D1
Drawn by	
Foot note 1	
Foot note 2	
Job number	
Location	
Material for	
Project name	
Revised	

Save the dialog settings specific to: Drawing OK Cancel

- ▶ The fields in the dialog have been rearranged and segregated based on the purpose of the fields;
 - ▶ The configuration file has been enhanced to control the visibility of the fields
 - ▶ A new option to save the dialog settings specific to Drawing/Current user/All users has been introduced.
4. Steelpac and Ariadis file output (.SDI)

The dialog has been enhanced to support the resetting of the dialog settings to the installed state, by clicking on the new “Reset” button.

A defect related to spiral bars of specific shapes has been fixed.
 5. aSa file output (.CAD)

The dialog has been enhanced to support the resetting of the dialog settings to the installed state, by clicking on the new “Reset” button.

The output has been enhanced to support 4 characters as the control code.

A defect related to the output configuration following a specific sequence has been fixed.

A defect related to switching between Imperial/Metric configuration settings has been fixed.
 6. aSa file output (.RDX)

A validation to restrict the number of characters when printing the notes field has been introduced.

A few defects related to retaining the Bid item ID, Excuse code ID and Placing code ID have been fixed.

A defect has been fixed when setting the default value for the release description.
 7. Soule file output (.SLE)

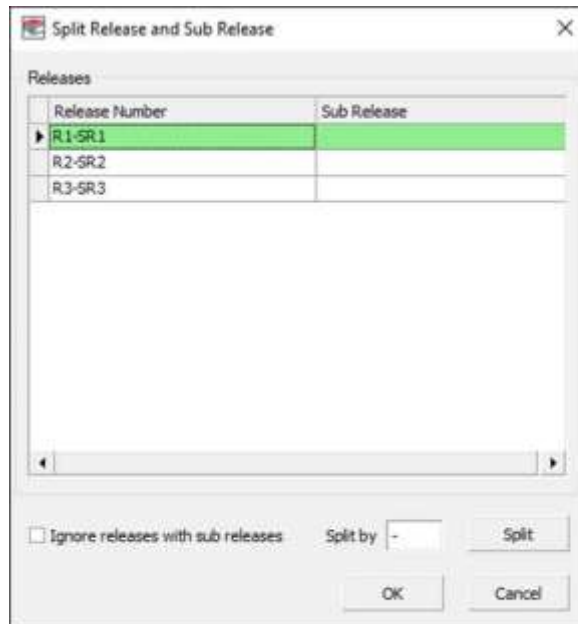
The dialog is enhanced to support the resetting of the dialog settings to the installed state, by clicking on the new “Reset” button.
 8. Soule file output (.XML)

The dialog has been enhanced to support the resetting of the dialog settings to the installed state, by clicking on the new “Reset” button.
 9. Sub release

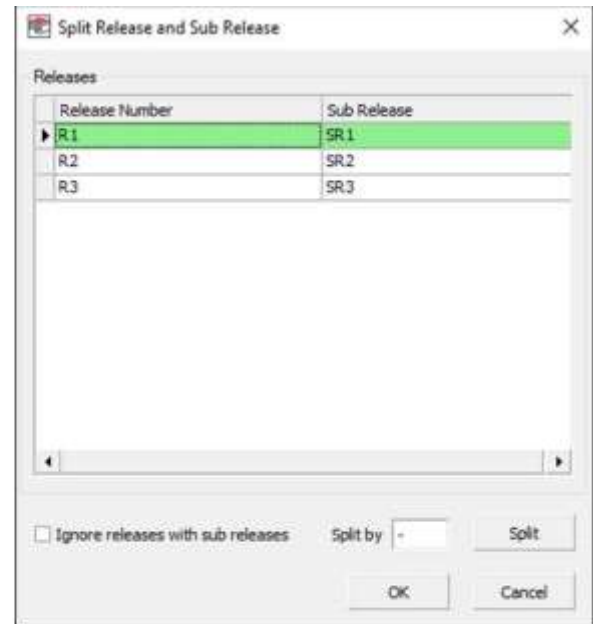
A new command, “CADS_RC_SPLITRELEASEANDSUBRELEASE” has been introduced.

Drawings created in V2021.0 or lower do not support the sub release option, if they are opened in V2022.0 or higher, this command helps to split the sub release from the release number.

For instance, if any of the release number in the drawing created in the older versions has release number and sub release separated by special character then, using this command will split the release number and sub release.



Before splitting



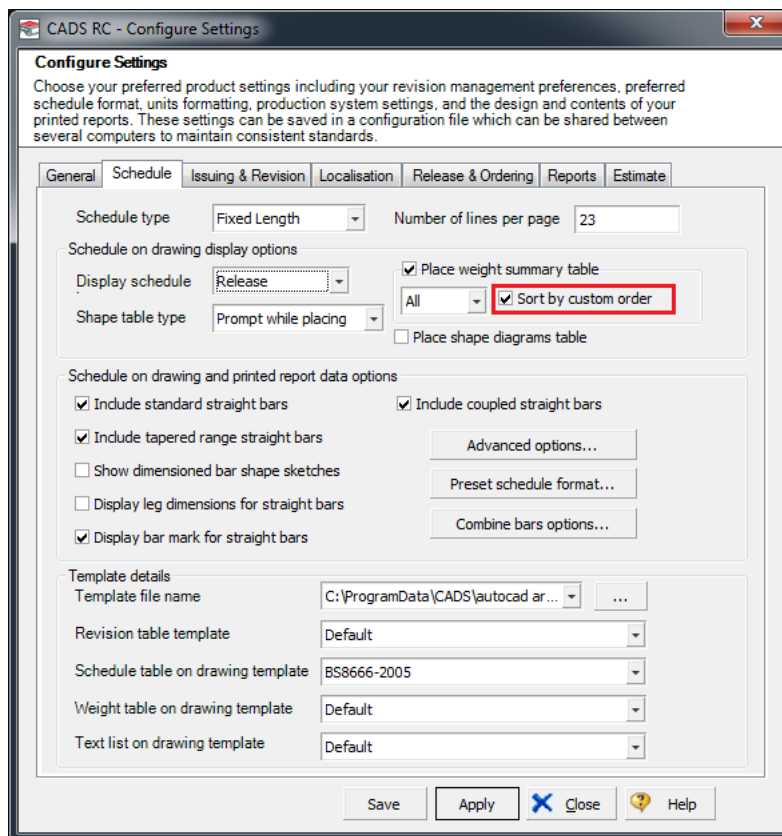
After splitting

10. Schedule on drawing

The following enhancements have been made:

1. Sorting of members/releases in the weight summary table, this can now be set to match the sort order in the respective member/release dialogs.

A new configuration setting “Sort by custom order” has been introduced as shown below:



2. Supports the following new fields:

- ▶ Release Description1 (<Db:ReleaseDescription1>);
- ▶ Release Description2 (<Db:ReleaseDescription2>)

11. RC LISP API improvements

A new LISP command, "CADS_RCL_CREATE_MEMBER" has been introduced. This command allows the creation of a new member title and provides the option to set it as the current member title in the drawing.

12. New generation macros

Enhancements and defect fixes have been made in the following new generation macros:

- ▶ Area Detailer;
- ▶ Draw Lap Dog Leg Bar;
- ▶ Share Range Line;
- ▶ Add Standee/Chair;
- ▶ Radial Bar Detailer;
- ▶ Mesh Calculator;
- ▶ Show All Bars in Range;
- ▶ Trim Openings.

13. Licensing

The CADS Licensing Wizard has been enhanced to place the Cloud Licence option as the first one in the list.



The Cloud license has been enhanced to specify the maximum supported versions and to generate the log files in a folder similar to all CADS products.

A defect related to cloud licensing using the proxy server has been fixed.

A defect related to converting the demo licence to full licence at a specific sequence has been fixed.

A defect related to importing the network settings in the CADS Software Licence Manager at a specific sequence has been fixed.

A defect related to displaying the licence information in the splash panels and about box at a specific sequence has been fixed.

A defect in which the cloud licence was getting locked at a specific sequence has been fixed.

14. Coupler improvements

Improvements have been made in such a way that the coupler data folder can be configured from a custom location, which is different from the default coupler data folder.

The Ancon coupler data is updated to include the following:

- ▶ New MBT transition coupler types;
- ▶ New Bartec plus coupler types;
- ▶ End adjustment values for TTP couplers.

The Lenton coupler data is updated to include the coupler with thread block for MT12 coupler types.

A defect related to the coupler symbol rotation, on using the actual size option has been fixed.

15. Defect fixes

A few defects specific to some shape codes and label sketches have been fixed.

A few defects related to the Excel report have been fixed.

A defect related to setting the drawing set number to more than 60 characters has been fixed.

A defect related to reporting the damaged tapered range has been fixed.

A defect in which the invalid flag was not placed for the schedule on drawing at a particular sequence has been fixed.

A defect related to the bar reference scale factor getting changed automatically has been fixed.

A defect has been fixed in which an invalid warning message was displayed on drawing a new bar view for an existing bar.

Version 2021.10 [08 December 2020]

1. AutoCAD Support

CADS RC 2021.10 supports the following Autodesk platforms:

AutoCAD Vertical	Supported Versions
AutoCAD	2019, 2020 & 2021
AutoCAD Architecture	2019, 2020 & 2021

2. Sub release

A new field, Sub Release is added to the release properties to support ordering a main release with multiple sub releases

3. Uniclass layering system for BS 1192:2015

Enhancements have been included to support both upper and lower cases for layer names.

New header and footer fields such as Code, Originator, Zone, Level, Type and Role have been supported.

New title block drawings with the enhanced header and footer fields have been included.

New templates for REPX report, Schedule on drawing and Excel report have been included with the new header and footer fields.

A new DEF file, EC2-UNICLASS.DEF has been introduced with the layer names conforming to BS 1192:2015.

A new layer definition file, RC-LAY-UNICLASS.TXT is introduced with the layer names conforming to BS 1192 2015.

4. Save as V9.12 Drawing...

The new 'Save as V9.12 Drawing...' allows you to save back the drawings created in CADS RC 2021.10 and higher versions to V9.12 drawing file format.

This command can be accessed in one of the following ways:

- Using the 'Save as V9.12 Drawing...' menu in CADS RC->Utilities pop-up menu.
- Using the command "CADS_RC_SAVE_AS_V912" from the command prompt.

5. aSa file output (.CAD)

When a v2021.1 drawing is saved back to an earlier version of CADS RC changes have been made to retain the aSa dialog settings.

A new field, Grade/Grade code is introduced, based on which Grade/Grade code will be output.

Enhancements are made to report the values of end preparation for the threaded bars.

Enhancements are made to output the main release with sub release.

6. aSa file output (.RDX)

When a v2021.1 drawing is saved back to an earlier version of CADS RC changes have been made to retain the aSa dialog settings.

Enhancements are made to report the values of end preparation for the threaded bars.

7. Soule file output (.XML)

When a v2021.1 drawing is saved back to an earlier version of CADS RC changes have been made to retain the Soule dialog settings.

Enhancements are made to highlight the mandatory fields more prominently.

8. Soule file output (.SLE)

When a v2021.1 drawing is saved back to an earlier version of CADS RC changes have been made to retain the Soule dialog settings.

Enhancements are made to highlight the mandatory fields more prominently.

9. SteelPAC and Ariadis file output (.SDI)

When a v2021.1 drawing is saved back to an earlier version of CADS RC changes have been made to retain the SteelPAC and Ariadis dialog settings.

10. New generation macros

Enhancements and defect fixes have been made in the following new generation macros:

- ▶ Share Range Line;
- ▶ Area Detailer;
- ▶ Split Range;
- ▶ Draw Lap Dog Leg Bar;
- ▶ Add Standee/Chair;
- ▶ Radial Bar Detailer;
- ▶ Highlight Bars.

11. RC LISP API improvements

The "CADS_RCL_ENTGET" LISP API is enhanced to include the following new fields:

- ▶ Release order status;
- ▶ Sub release;
- ▶ First bar length;
- ▶ Last bar length;
- ▶ Bid item;
- ▶ Coupler type attached to the end1 & end2;
- ▶ Coupler manufacturer attached to the end1 & end2;
- ▶ Coupler description attached to the end1 & end2;

- ▶ Coupler end treatment to the end1 & end2.

12. Viewport manager improvements

Create Layout command has been enhanced to set the default layout to the user's choice.

A defect in which the custom scale was shown incorrectly has been fixed.

A defect in which the viewport scale was not shown properly for a specific sequence has been fixed.

13. Defect fixes

A defect in setting bend rounding value to 0 has been fixed.

A few defects specific to some shape codes have been fixed.

A defect in which the layer colour of the schedule on drawing was incorrect has been fixed.

A defect related to release and specific to a particular AutoCAD has been fixed.

A defect related to removing prefix for a specific sequence has been fixed.

A few defects related to Windows 10 Pro Version 20H2 Operating System have been fixed.

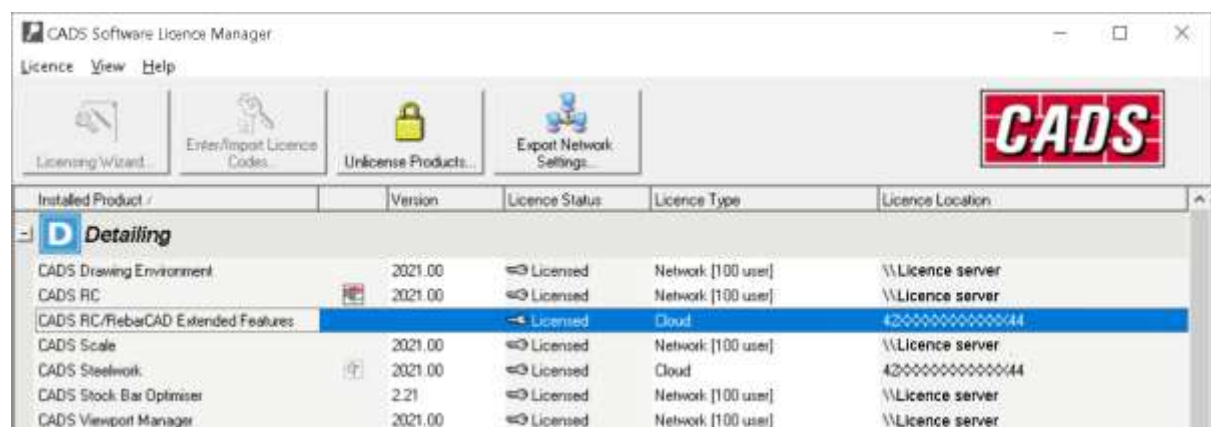
Version 2021.0 [05 August 2020]

1. AutoCAD Support

CADS RC 2021.0 supports the following Autodesk platforms:

AutoCAD Vertical	Supported Versions
AutoCAD	2019, 2020 & 2021
AutoCAD Architecture	2019, 2020 & 2021

2. CADS RC/RebarCAD Extended Features



The CADS RC/RebarCAD Extended Features are available as a separate feature that include the following extended features for CADS RC:

- ▶ Soule File Output (.XML);
- ▶ aSa File Output (.RDX);

- ▶ Excel Export.

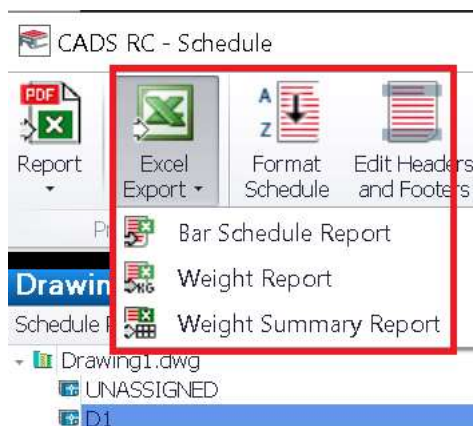
3. Excel Export

A new feature to export data to an Excel worksheet with custom formatting is supported. The user can create and use their own custom template for this data export.

The Print Panel has been amended.

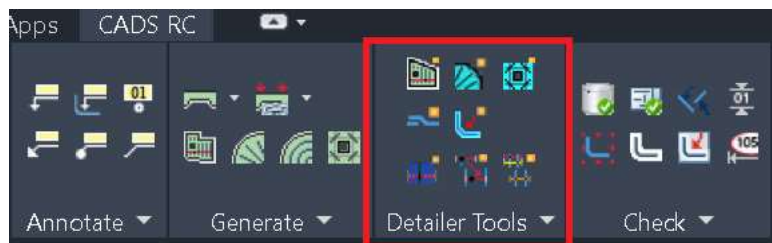
- ▶ The Report button uses the configured REPX report to generate the selected Report Preview;
- ▶ The Excel Export Button uses the configured Excel Template to generate the selected report.

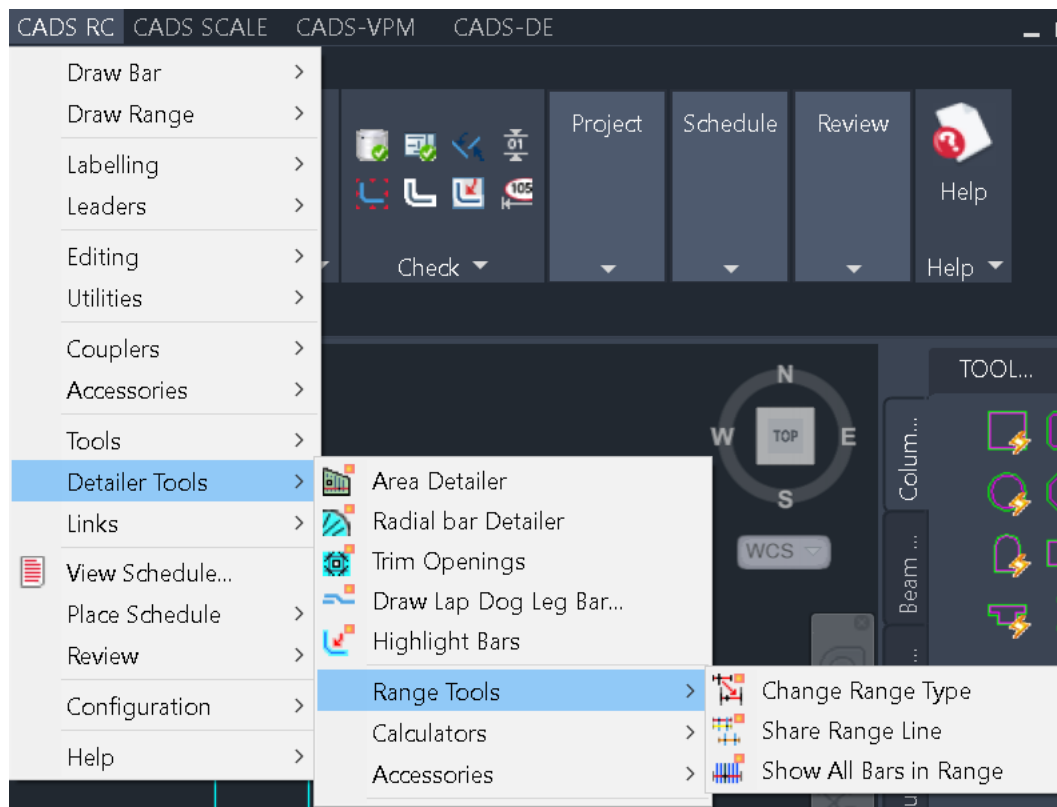
Two different report formats can be configured in the Schedule for the Schedule Report, Weight Report and the Weight Summary Report, one in the form of REPX and the other in the form of an Excel template.



Refer to the document, "Excel Template Creation for CADS RC User Manual.pdf" in the 'CADS-RC\Manuals' folder for more details on this feature.

4. New generation macros





A new set of productivity tools have been introduced with more improvements, these will replace the following existing productivity tools in future versions. However, this version will have both the sets of tools in parallel.

- ▶ Area Detailer;
- ▶ Radial Bar Detailer;
- ▶ Trim Openings;
- ▶ Draw Lap Dog Leg Bar;
- ▶ Highlight Bars;
- ▶ Change Range Type;
- ▶ Share Range Line;
- ▶ Show All Bars in Range;
- ▶ Steel Quantity Calculator;
- ▶ Mesh Calculator;
- ▶ Add Standee/Chair.

5. RC LISP API improvements

The "CADS_RCL_ENTGET" LISP API is enhanced to include the following new fields:

- ▶ Bar set number;
- ▶ Release description;
- ▶ Length;
- ▶ First bar length;

- ▶ Last bar length;

The following new RC LISP API functions are introduced:

- ▶ CADS_RCL_GET_CUR_DET_STD - Gets the current detailing standard used in the drawing;
- ▶ CADS_RCL_GET_CUR_DET_STD_FILE - Gets the current detailing standard used in the drawing with the filename and the location;
- ▶ CADS_RCL_CHANGE_DET_STD - Changes the current detailing standard set in a drawing to a different one.

6. Uniclass layering system for BS 1192

Enhancements have been included to support layer names with more than 31 characters.

7. SMART Slab Detailer improvements

The SMART Slab Detailer has been enhanced to support importing V1.0 & V3.0 .asf files.

A sample .asf file created in V3.0 is available in the "Smart Modeller Slab Detailer 2021.0\Examples" folder.

8. Coupler improvements


The Lenton coupler data is updated to include the end preparation details required for the aSa file output (.CAD) and aSa file output (.RDX) production systems.

Support for Firsty couplers has been included.

Support for Alligator couplers has been included.

HY-TEN coupler data has been updated to include the connecting coupler types.

9. aSa file output (.RDX)



The dialog has been enhanced with the following features:

- ▶ The fields in the dialog are rearranged and segregated based on the purpose of the fields;
- ▶ Whenever a single release is selected for ordering, then the unique order number entered in the “Order Material” dialog will be set as the “Control code”. The “Control code” cannot be edited in these circumstances;
- ▶ Mandatory fields are highlighted to look more prominent;
- ▶ The value for the “Description” field is set as the release description of the appropriate release and cannot be edited;
- ▶ Reset option introduced to reset the values in the fields to their default settings;
- ▶ The default value for the Steel country ID is set as ANY;
- ▶ The following new fields are supported:
 - Drop down list for “Bid Item ID”;
 - Drop down list for “Excuse Code ID”;
 - Drop down list for “Placing Code ID”;
 - Auto mark;
 - Alpha character.

The output has been enhanced for the following:

- ▶ Header data for multiple release;
- ▶ End preparation data;

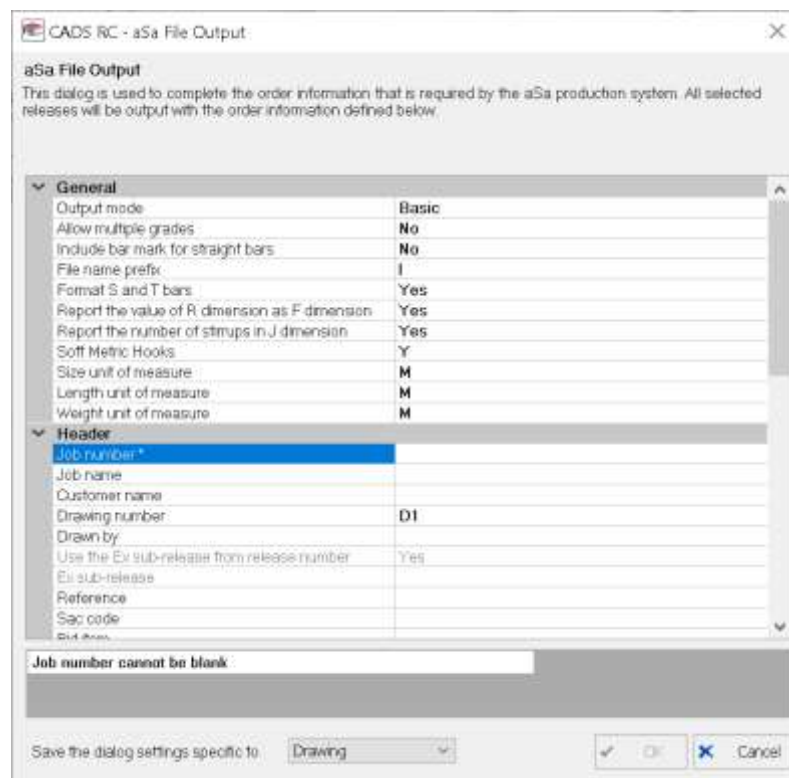
- ▶ Bending dimension data;
- ▶ Straight vary bar data;
- ▶ Segregation of the bar items based on the shape category;
- ▶ Combining of the bar items for similar bar data;
- ▶ Sorting based on shape code, bar size, bar length and end preparation data;

The configuration file has been enhanced to control the following:

- ▶ Visibility of the fields;
- ▶ Read only status of the fields;
- ▶ Non optional fields;
- ▶ Ignore retaining user values for the fields.

A defect in which the values of cutting precision and bending precision values set in the previous session are not retained has been fixed.

10. aSa file output (.CAD)



The dialog has been enhanced to support the following new fields:

- ▶ Soft Metric Hooks;
- ▶ Size unit of measure;
- ▶ Length unit of measure;
- ▶ Weight unit of measure;
- ▶ Use the Ex sub-release from the release number;
- ▶ Ex sub-release.

The output has been enhanced for the following:

- ▶ Multiple grade support;
- ▶ End preparation data in Basic output mode;
- ▶ End preparation data in Extended output mode.

The configuration file has been enhanced to control the following:

- ▶ Visibility of the fields.

A defect in which the output was generated with a blank job number at a specific sequence has been fixed.

A defect in which the output was not generated at a specific sequence has been fixed.

11. Soule file output (.XML)

A defect in which the node coating was blank with epoxy coated bar has been fixed.

12. SteelPAC output (.SDI)

A defect in which the output was not generated at a specific sequence has been fixed.

A defect in which striked out tapered bars were not reported at a specific sequence has been fixed.

13. CADS Viewport Manager improvements

A new global configuration, "IGNORESCALINGFORNONRCTEXT" has been introduced to handle separate scale settings for non-RC Text entities.

The following new VPM LISP API functions are introduced:

- ▶ CADS_VPML_GETCFG - Gets the global configuration value from the CADS Viewport Manager;
- ▶ CADS_VPML_SETCFG - Sets the global configuration value to the CADS Viewport Manager.
- ▶ Defect fixes

A defect in which the coupler label was incorrect at a specific sequence has been fixed.

A defect in which the drawing sheets were created accidentally configuring the anonymous blocks at a specific sequence has been fixed.

A defect in which the schedule was not shown at a specific sequence has been fixed.

A defect in which reset all viewports was not working at a specific sequence has been fixed.

A defect in which multiple edit was changing the bar mark of similar bars at a specific sequence has been fixed.

A defect in which the start L bar was drawn more than the stock length at a specific sequence has been fixed.

A defect in which the label was not placed for the copied Over Stock Length (OSL) bar at a specific sequence has been fixed.

A defect in which the range centre value was incorrect for Over Stock Length OSL bar at a specific sequence has been fixed.

A defect in which the decimal values were not accepted for the bar offset value in the Over Stock Length OSL configuration dialog has been fixed.

Version 2020.0

1. AutoCAD Support

CADS RC 2020.0 supports the following Autodesk platforms:

AutoCAD Vertical	Supported Versions
AutoCAD	2018, 2019 & 2020
AutoCAD Architecture	2018, 2019 & 2020

2. Licensing

Cloud licencing is enhanced to support the proxy server and the DMZ Network relay server.

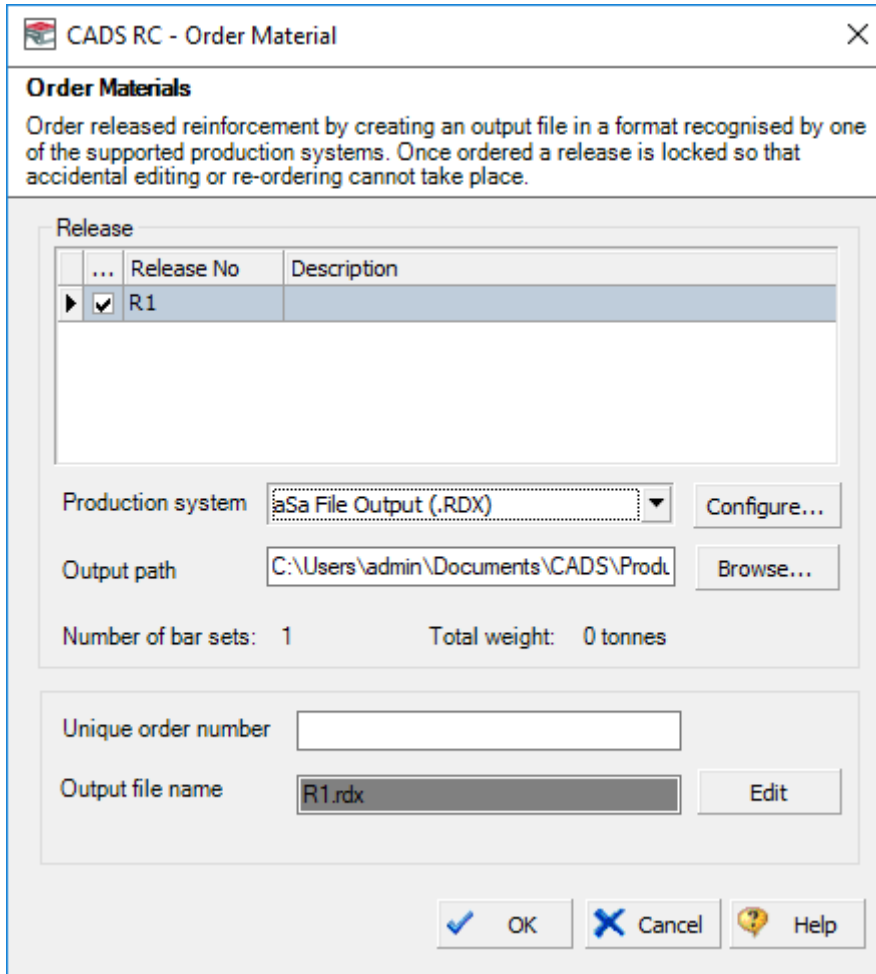
3. The tool tip is enhanced to display the weight of the bar.

4. The "CADS_RCL_ENTGET" LISP API is enhanced to include the following new fields:

- ▶ Total Bar Length;
- ▶ Member title;
- ▶ Release number;
- ▶ Drawing sheet number;
- ▶ Multiplier;
- ▶ Hidden multiplier;
- ▶ Member quantity.

5. aSa file output (.RDX)

The aSa production system now supports a new .RDX file format.



CADS RC - Order Material

Order Materials
 Order released reinforcement by creating an output file in a format recognised by one of the supported production systems. Once ordered a release is locked so that accidental editing or re-ordering cannot take place.

Release

...	Release No	Description
<input checked="" type="checkbox"/>	R1	

Production system: **aSa File Output (.RDX)** Configure...

Output path: **C:\Users\admin\Documents\CADS\Produ** Browse...

Number of bar sets: **1** Total weight: **0 tonnes**

Unique order number:

Output file name: **R1.rdx** Edit

OK Cancel Help

6. Defect fixes

A defect in which anonymous blocks configured as the title block by mistake prompting for drawing sheet number has been fixed.

A few defects related to the aSa production system have been fixed.

A few defects related to the bar shape diagrams have been fixed.

Version 2019.0

1. AutoCAD Support

CADS RC 2019.0 supports the following Autodesk platforms:

AutoCAD Vertical	Supported Versions
AutoCAD	2017, 2018 & 2019
AutoCAD Architecture	2017, 2018 & 2019

2. Cloud licensing enhancements

Cloud licensing method is now enhanced to support the proxy server and the network relay server.

3. Defect fixes

A defect in customising the REPX weight summary report, at a specific sequence has been fixed.

A defect in the multiple pitch range, in which the spacing becomes zero, at a particular sequence has been fixed.

A defect, in which an invisible attribute for a drawing sheet number was added automatically to bars, at a particular sequence has been fixed.

A defect in the 'Order Material' dialog, in which the number of bar sets was incorrect at a particular sequence has been fixed.

A defect in the aSa production system, in which the proper warning message was not displayed, on selecting multiple grades, has been fixed.

A defect in the Soule production system has been fixed.

A defect in the 'Radial Bar Detailer' macro, in the default design spacing has been fixed.

Version 2018.1

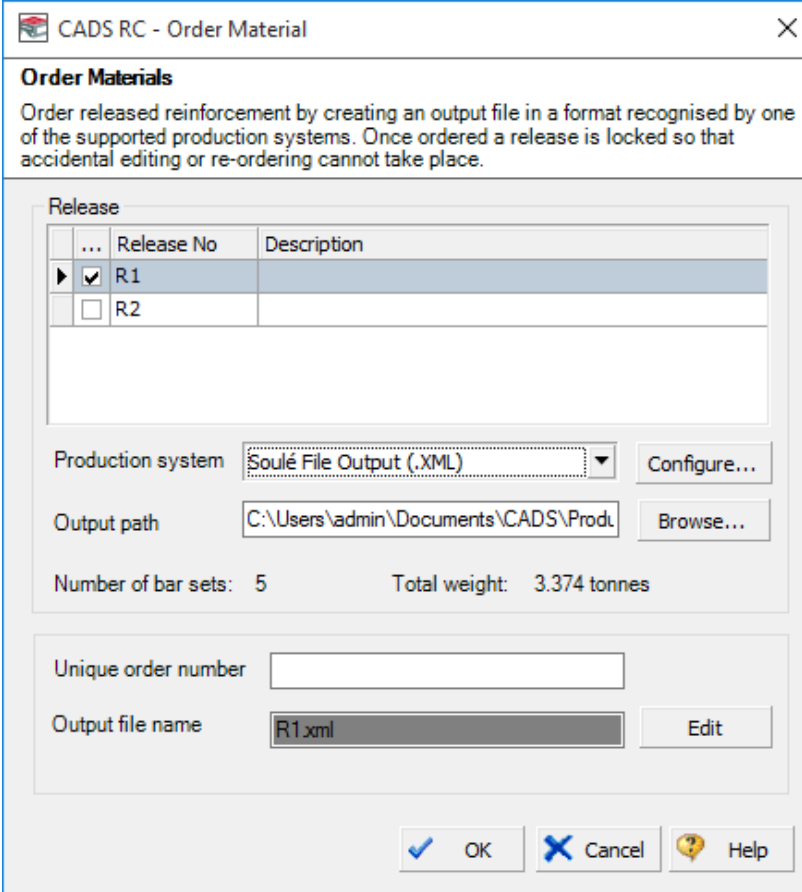
1. AutoCAD Support

CADS RC 2018.1 supports the following Autodesk platforms:

AutoCAD Vertical	Supported Versions
AutoCAD	2016, 2017 & 2018
AutoCAD Architecture	2016, 2017 & 2018

2. Soule file output (.xml)

The Soule production system now supports a new .xml file format.



CADS RC - Order Material

Order Materials
 Order released reinforcement by creating an output file in a format recognised by one of the supported production systems. Once ordered a release is locked so that accidental editing or re-ordering cannot take place.

Release

...	Release No	Description
<input checked="" type="checkbox"/>	R1	
<input type="checkbox"/>	R2	

Production system: **Soulé File Output (.XML)** Configure...

Output path: **C:\Users\admin\Documents\CADS\Produ** Browse...

Number of bar sets: **5** Total weight: **3.374 tonnes**

Unique order number:


Output file name: **R1.xml** Edit

OK Cancel Help

3. aSa file output

The aSa production system has been enhanced to support ordering of multiple releases at a time. Once multiple releases are selected for ordering then,

- ▶ Separate output files will be generated for each of the selected releases;
- ▶ The user will not be allowed to set the unique order number and the output filename will be set the same as that of the release number;
- ▶ The header information will be set the same for all the output files.


CADS RC - Order Material

Order Materials
 Order released reinforcement by creating an output file in a format recognised by one of the supported production systems. Once ordered a release is locked so that accidental editing or re-ordering cannot take place.

Release

	Release No	Description
<input checked="" type="checkbox"/>	R1	
<input checked="" type="checkbox"/>	R2	

Production system: aSa File Output (.CAD) Configure...
 Output path: C:\Users\admin\Documents\CADS\Produ Browse...
 Number of bar sets: 17 Total weight: 6.494 tonnes

Unique order number:
 Output file name: R2.cad Edit

OK Cancel Help

4. Licensing

Licensing is enhanced to support cloud licensing.



5. Defect fixes

A defect in the grid tool, in which the extension lines were missing, has been fixed.

A defect, in which there was a mismatch in the weight per bar in the schedule on drawing at a specific sequence, has been fixed.

A defect in adding labels to over stock bars at a specific sequence has been fixed.

A defect, in which the electronic schedule data was not generated at a specific sequence when the drawing file was saved, has been fixed.

Version 2018.0

1. AutoCAD Support

CADS RC 2018.0 supports the following Autodesk platforms:

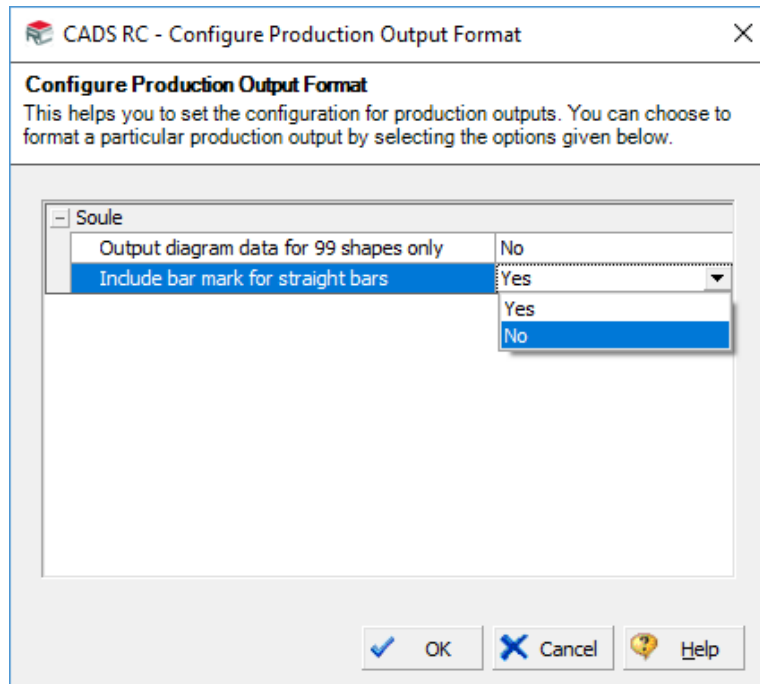
AutoCAD Vertical	Supported Versions
AutoCAD	2016, 2017 & 2018
AutoCAD Architecture	2016, 2017 & 2018

2. Order materials

The 'Order Materials' dialog is enhanced to allow the user to create a new folder for production output.

3. Soule file output

The Soule file output now includes bar marks for straight bars, based on the configuration. If the configuration, "Include bar mark for straight bars" is set to 'Yes', then the bar mark will be output for the straight bars and if it is set to 'No', then the bar mark will not be output.



4. Defect fixes

A defect in which the dimension lines were not added in the stair outlines has been fixed.

A defect when the release colour set to certain colours was not set appropriately for bar labels has been fixed.

A defect in the Check database command at a specific sequence has been fixed.

A defect in which the weight summary table was not marked with an invalid flag at a particular sequence has been fixed.

The end adjustment value for DEXTRA BTSTD Type C positional coupler is now updated to match the latest DEXTRA ROLLTEC product datasheet.

A defect in which the over stock length bars with a specific shape code were stretched at a particular sequence has been fixed.

Version 2017.10

1. Coupler improvements

The DEXTRA ROLLTEC coupler data is updated to match the latest DEXTRA ROLLTEC product data sheet.

The HY-TEN coupler data is updated to match the latest HY-TEN product brochure.

2. Coupler dialog enhancement

The 'Add/Edit coupler' dialog has been enhanced so that when a manufacturer's name is set, the check box to 'Attach Label' is checked by default, when the global configuration 'AUTOATTACHLABEL' is set to 'YES' in the 'COUPLERSCONFIG'. This allows the user to automatically attach the coupler labels to the bars when the coupler/thread symbols are attached to it.

3. Defect fixes

A defect where the blank line inserted to the first line of the schedule was not displayed in the schedule on drawing in a particular sequence has been fixed.

A defect where the issue and revision configuration settings configured in the drawings created in the older version were lost on opening the drawing in the latest version, has been fixed.

A defect in the project match bar tool, where the bar marks were generated ignoring the prefix in a particular sequence has been fixed.

A defect where the existence of a blank AutoCAD layer in the CADS RC drawing caused the loss of the schedule configuration settings, has been fixed.

A defect where an error occurred when placing the schedule on the drawing in a particular sequence, has been fixed.

Version 2017

1. AutoCAD Support

CADS RC 2017 supports the following Autodesk platforms:

AutoCAD Vertical	Supported Versions
AutoCAD	2015, 2016 & 2017
AutoCAD Architecture	2015, 2016 & 2017

2. Save as V9.08 Drawing...

The new 'Save as V9.08 Drawing...' allows you to save back the drawings created in CADS RC 2017 and higher versions in V9.08 format.

This command can be accessed in one of the following ways:

- Using the 'Save as V9.08 Drawing...' menu in CADS RC->Utilities pop-up menu.
- Using the command "CADS_RC_SAVE_AS_V908" from the command prompt.

The drawing will be saved back automatically in the AutoCAD file format compatible with V9.08.

The default filename will be appended with V908, so that you do not accidentally save your active drawing while saving back to an older version.

3. Save as V9.04 Drawing...

Since the CADS RC V9.04 through V9.07 shares the same CADS RC data structure, the existing command 'Save as V9.07 Drawing...' is now renamed as 'Save as V9.04 Drawing...' to be more appropriate.

The drawing will be saved back automatically in the AutoCAD file format compatible with V9.04.

The command is also improved to append the default filename with V904, so that you do not accidentally save your active drawing while saving back to an older version.

4. Save as V8.4 Drawing...

The drawing will be saved back automatically in the AutoCAD file format compatible with V8.4.

The command is also improved to append the default filename with V840, so that you do not accidentally save your active drawing while saving back to an older version.

5. Material Type

In all the coupler related dialogs, the caption 'Grade' is changed to 'Material Type' as they refer to the material type of the coupler.

6. Additional coupler symbols

Two symbols for form saver coupler and positional coupler are added to the existing coupler symbols list.

7. Defect fixes

A defect specific to AutoCAD 2016, in which a warning message was displayed, on loading CADS RC after opening the drawing is fixed.

A defect specific to AutoCAD 2016, in which the erase bar set warning message was displayed, on erasing AutoCAD entities is fixed.

Version 2016.1

1. Project Match Bars

The new 'Project Match Bars' tool allows you to match the bar marks of identical shape code and dimensions across drawing files within a project.

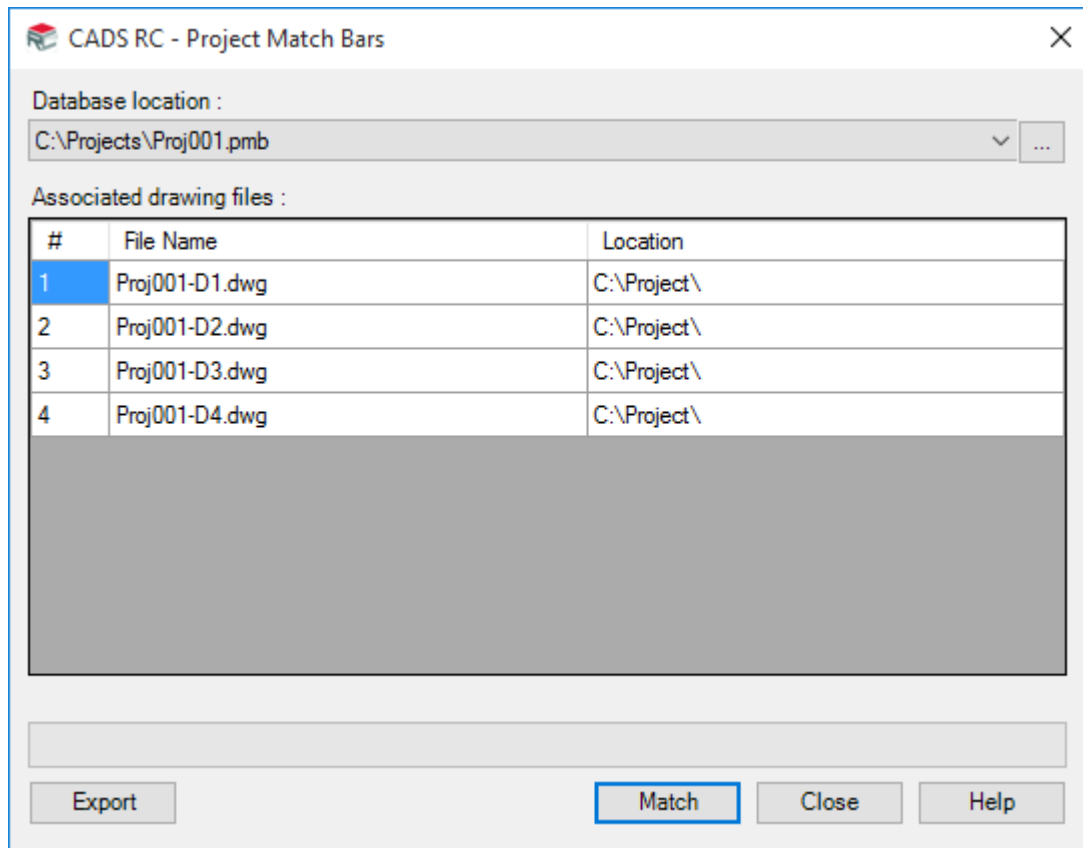
This tool can be accessed in one of the following ways:

- The 'Project Match Bars' menu in CADS RC->Utilities pop-up menu.
- The 'Project Match Bars' tool in the 'CADS RC' toolbar.
- The 'Project Match Bars' ribbon item in the 'Project' panel.



- "CADS_RC_PMB" command in the command prompt.

The Project Match Bars dialog will be displayed as shown in the image below:



Please refer to the help document for more details by clicking on the 'Help' button.

2. Object snap settings

The Object Snap settings issue has been fixed, in which the settings were sporadically lost.

3. Schedule improvements

The schedule format settings are now retained after inserting manual page breaks and after moving the schedule lines in the schedule.

It is now possible to insert a line (text line/blank line) above or below the selected schedule line in the schedule.

4. Reports and schedule on drawing improvements

Many improvements have been made in the reports.

A defect has been fixed in which the incorrect total weight of tapered ranges was reported (this happened when it was configured to display only the first and last bar of the tapered bars). This has been fixed in both the printed reports and in the schedule on drawing.

5. Issue and revision configurations

The issue and revision feature is enhanced with new configurations to configure the revision cloud layer, revision callout layer, revision table layer, revision cloud start width and revision cloud end width. You can now configure revision cloud and callout layers for each issue type.

6. Select bars

More filters are added to the 'Select Bars...' feature, which allows you to select the bars based on their type and size, bar mark prefix and drawing sheet.

7. Highlight bars

More filters are added to the 'Highlight Bars...' feature, which allows you to select the bars based on their type and size, bar mark prefix and drawing sheet.

8. Bar assignments

The features to assign bars to release, member, drawing sheet, bid item and bid structure are enhanced such that the bar labels are also highlighted in addition to the bar views, for easy identification of selected bar views and labels.

The 'New Set' and 'Range New Set' commands now allow you to pick the current bar assignments such as members, releases, drawing sheets, bid items and bid structures.

You can now apply release colour to bar labels either on release assignment or based on the order state of the associated release. Your preference can be configured in the 'Release and Ordering' configuration page.

9. Range improvements

Range texts are now made configurable for alternate ranges. The start mark, end mark and the total number of bars of the alternate ranges can also be configured as the range text for alternate ranges.

A defect has been fixed in which stretching ranges drawn with overstock length bars produced unexpected results.

The Check database command has been enhanced to detect and report any corrupted tapered ranges or ranges whose lengths are less than that of the c/c value.

10. Coupler improvements

The Coupler dialog has been reinstated to display the coupler details of both ends on a single screen.

When couplers are added to a bar view, any other bar views of the set automatically receive a coupler without the number of couplers changing in the Accessories List.

A defect has been fixed in which the coupler quantity was not considering the member quantity.

11. Production output improvements

The Order Materials feature now allows you to modify the desired production system in the Order Materials dialog itself.

A defect has been fixed that affected ordering when the production output system is Excel Format.

12. User interface improvements

The quick access toolbar in the CADS RC workspace has been modified such that the 'Toggle Automatic Loading' command is moved to the right end to avoid accidental selection.

13. Defect fixes

A defect has been fixed in which the database was corrupted when adding extra label notes with special characters.

A defect has been fixed in which moving the labels drawn with label sketches moved the label sketches a little away from the label text.

A defect has been fixed in which 'cancelling title block configuration' dialog popped up a warning message when no title blocks were configured.

A defect has been fixed in which the bar references added by selecting the bar label view were also duplicated while duplicating the bar view alone.

Version 2016

1. AutoCAD Support

CADS RC 2016 supports the following Autodesk platforms:

AutoCAD Vertical	Supported Versions
AutoCAD	2014, 2015 & 2016
AutoCAD Architecture	2014, 2015 & 2016

2. Administrative privileges are no longer required when launching the software.
3. Shape Sketches will get updated automatically if the master copy is modified.
4. An issue related to the changing of the default layer to the schedule layer after auto-save, has been fixed.

Version 2015.1

1. CADS RC 2015.1 can now be installed in parallel with previous versions of CADS RC.
2. Linear tapered ranges now support the “Adjust Ends” option.
3. The range text orientation has been corrected to follow the text reading standards while detailing ranges vertically.
4. A defect has been fixed in which the “Schedule on drawing” failed to sort correctly in a specific sequence.
5. A new option has been added to specify a tolerance value for bent bar leg dimensions when matching bar marks.
6. A new option has been added to specify a scale factor for the schedule on drawing.
7. A new option has been added to configure restricted bar sizes and to identify the instances of such bars present in the drawing file through the “Drawing Audit” command.
8. The “Override Revision Mark” command has been enhanced to display all the revision marks available in the drawing file.
9. A defect has been fixed in which the schedule failed to update when the “Rounding configuration setting” was changed.
10. A new option has been added to specify the rotation angle while placing bar references.
11. A defect has been fixed in the “Set to View” command, which failed to remove extra notes attached to the label.
12. A defect has been fixed in which the schedule on drawing was not marked “INVALID” in a specific sequence.

13. A defect has been fixed in the Group Layering Option (GLO), which modified the c/c values of ranges in a specific sequence.
14. A bar references defect has been fixed, which scaled improperly while placing as blocks.
15. A defect has been fixed in the "Stretch" command, which incorrectly changed the bar marks in a specific sequence.
16. A defect has been fixed in which the "Ranges" created using the "Split Range" tool lost their bar information when duplicated.
17. A defect has been fixed in the Pinnacle production output file and in the Harris production output file which exported deleted bar information in a specific sequence.
18. A defect has been fixed in the Over Stock Length (OSL) feature to update the minimum dimensions based on the configured "Dimension Minimums".
19. A defect has been fixed in the "Add/Edit coupler" command, which failed to retain the coupler information in a specific sequence.
20. A defect has been fixed in which coupler symbols were lost while pasting or mirroring bars with couplers as a "View".
21. A defect has been fixed in which the Accessories list failed to update when bars with couplers were duplicated as a "Set".
22. A defect has been fixed in the "Uncombined bars" command, which reported an error in a specific sequence.
23. A defect has been fixed in which Automatic Dimensioned Leaders (ADL) were drawn incorrectly in a specific sequence.
24. A defect has been fixed that placed the schedule on drawing in an incorrect table format, specific to AutoCAD 2015.
25. A defect has been fixed in which leaders were drawn incorrectly when the leader mode was set to "Centre".
26. A defect has been fixed in the "Save As v8.4x" command, which caused the application to crash in a specific sequence.
27. A defect has been fixed in the "Run to Path" command, which placed the bars incorrectly in a specific sequence.
28. A defect has been fixed to show the correct view of the bars while importing jobs through the beam link option.
29. A defect has been fixed in the "Cut Stock Bar Optimiser" to show the correct quantity of utilised stock bars in the offcut file.
30. A defect has been fixed in CADS DE, which caused the application to crash in a specific sequence.
31. A defect has been fixed in which the stair flight detailer reported an error message in the command prompt.

Version 2015 Service Pack

1. Fixed a defect that reported the incorrect number of bars in Soule, Pinnacle, Romac, Canada, Arma, Shear97 and RMS production outputs, in a specific sequence.

Version 2015

1. Support for AutoCAD 2015.
2. Default OSNAP option has now been reverted to use “Near” while placing a label, instead of the default value.
3. New feature to reset Member, Release and a few other dialogs to its default position has been introduced.
4. New option added to the “Match bars” feature to suppress or display the default prompts.
5. Option added to show or hide the first issue revision mark in the schedule and drawing reports.
6. Fixed a defect in which incorrect values were displayed for the “page number” and “total page” fields in a specific sequence.
7. Fixed a defect that took considerable time in a specific sequence to place a schedule in the drawing.
8. Fixed a defect in which the “Edit Range” dialog displayed duplicated dimensions for tapered ranges in a specific sequence.
9. Fixed a defect which showed a “discrepancy error” when more than 60 characters were entered in the bar label notes.
10. Fixed the crash which occurred while using the “Place shape schedule” feature.
11. Fixed a defect which updated all bar sets of the same bar mark when one of its bar was stretched.
12. Fixed a defect which adopted the label direction of a previously drawn taper range.
13. Fixed a defect which did not update the schedule revision mark while editing the bars that were combined in the schedule.
14. Fixed few defects in the Radial Bar Detailer that prevented a change of type and did not show a few shapes correctly.
15. Improvements made to the “Assign bars to release” feature which earlier displayed only the used types in a drawing instead of the entire configured types.

Version 9.12 Service Pack (Build 1819)

1. Fix to a Check Database error, which corrupted the drawing data when a drawing sheet was deleted in a specific sequence.
2. Fix to the Check Database command to include an additional check for the bar set line number.
3. Fix to the range text annotation in fixed pitch and staggered fixed pitch ranges which reported an incorrect number of bars in a specific sequence.

Version 9.12

1. Support for AutoCAD 2014, AutoCAD Architecture 2014, AutoCAD Civil 3D 2014, AutoCAD Map 3D 2014, AutoCAD Mechanical 2014, AutoCAD MEP 2014 and AutoCAD Structural Detailing 2014.

2. Enhancement to Coupler dialog.
3. New feature to assign symbols to different types and makes of Couplers and Threads.
4. New feature allows multiple editing of Bars with Coupler.
5. New feature to apply Coupler Grades.
6. Option to identify Unavailable Couplers present in the drawing.
7. Fix to Coupler feature to support copy and mirror operation on Bar View with Coupler.
8. Fix to Accessories list which failed to update the Coupler quantity in specific sequences.
9. Enhancement to the Match bars command to match bar based on the Drawing Sheet, Release or Member.
10. Enhancement to the Compact bars command to compact bar based on the Drawing Sheet, Release or Member and to specify the starting Bar Mark number.
11. New feature to configure Stock Lengths for each Bar Size.
12. New feature to configure additional Tick types in Tick and Tag Feature.
13. Enhancement to the Drawing Audit command to identify the Bars detailed with length greater than the stock length.
14. New feature to configure the Bar Reference to include a Block or Dimensioned Shape sketch.
15. New feature to group revision clouds.
16. New feature to configure the Range Annotation format and position.
17. Option to configure the Range Length for Range Annotation.
18. New feature to include dimensioned sketches in Schedule on Drawing and printed reports.
19. New command CADS_RC_TRC introduced to identify corrupted tapered ranges in a drawing.
20. New feature to report unlabelled bars as Incomplete while generating Production Output Files, placing Bar Schedule on Drawing and generating printed Reports.
21. New feature to place a curtail length for Tapered Ranges.
22. Option to support Calibri font type in shape diagram configuration.
23. Enhancement to GLO feature to support Area detailer, Change range, Split range and Circular Bar Detailer.
24. Support for Lenton Lock Coupler.
25. Enhancement to custom sorting for Member and Release to default from drawing.
26. Option to display coupler type in Dimensioned sketches using custom block files.
27. Option to print Coupler Report from the Bar Schedule using the customised report file.
28. Option to configure drawing of Unscheduled Bars in a separate layer.
29. Option to configure Bar Leader Line offset from the Bar Label.
30. Option to exclude Bar Mark for labelling Unscheduled Bars.
31. Option to view bar Set Number in Free Form Bar Schedule view.
32. Fix to allow the display of alternating solid and hollow bar for Alternate Range Bar Runs.

33. New feature to display both the Nett length and Gross length of bars in the Bar Schedule using the customised BDF file.
34. New feature to display bar ends as 'doughnuts' or 'cross' based on the projecting bar view when using the customised BDF file.
35. Fix to Split Range Tool which failed to execute in specific sequences.
36. Fix to pile cap detailer tool to round off spacing as per rounding configuration.
37. Fix to Schedule Revision Mark which failed to update in a specific sequence.
38. Fix to VPM viewports to avoid multiple warning messages for overlapped viewports.
39. Fix to Bar in Section which failed to draw as per configuration in a specific sequence.
40. Fix to Weight Report and Weight Summary Report to display correct user field values.
41. Fix to Change Set to View command to remove Extra Notes.
42. Fix to the Bar Schedule on Drawing feature to display straight bar leg dimension as per the Bar Schedule Configuration.
43. Fix to the Check RC Database command for invalid date error warning.
44. Fix to the Check RC Database command to improve performance in a specific sequence.
45. Fix to the Drawing Issue feature to improve performance with the Lock issued line configuration option.
46. Fix to the Run to path command which detailed incorrectly in a specific sequence.
47. Fix to the RC Beam Designer Link to detail the Bar Leader line in the correct position.
48. Fix to Change Range Type for incorrect range drawing in a specific sequence.
49. Fix to CADS_RC_REDRAW to correct bar orientation in a specific sequence.
50. Fix to Bar Schedule - Localisation configuration setting to restrict '0' precision when Length configured to show in Meters.
51. Fix to ensure the bent bar rounding value is not applied to straight bars in a specific sequence.
52. Fix to the Special Bar feature to read the correct file path in a specific sequence.
53. Fix to the Override Revision Mark when '-' is used for the first issue.
54. Fix to the CADS_RC_REDRAW command to avoid bars with coupler 'explode' in a specific sequence.
55. Fix to the Overstock length feature to work with the DIMENSIONMINIMUMS configuration in a specific sequence.
56. Fix for AutoCAD Map3D 2013 to avoid an application crash while closing the application.
57. Fix to the printed Reports and Bar Schedule on Drawing to report Unit weight in a specific sequence.
58. Fix to Bar Reference to avoid incorrect reporting as a non-linked entity in a specific sequence.
59. Fix to Tapered Ranges for inconsistencies between Bar Schedule and drawing in a specific sequence.
60. Fix to delete viewport border in model space if the viewport is deleted in the paper space.
61. Fix to Share Range feature which failed to execute in a specific sequence.

62. Fix to incorrect text size when the drawing is saved in paper space.
63. Fix to the AutoCAD drop down menu to display properly in a specific sequence.
64. Fix to Area detailer to draw the correct envelope in a specific sequence.
65. Fix to Bar Reference to display the correct Bar Mark in Over Stock Length group.
66. Fix to Multiple Pitch Range to update centre to centre spacing during Stretch Bar command.
67. Fix to the CADS_RC_REDRAW command which incorrectly scaled the Bar Reference in a specific sequence.
68. Fix to the configuration \$SHPCD field to display the Bar Shape name in the label to match the display in Bar Schedule.
69. Fix to the AutoCAD Save as command to avoid an application crash in a specific sequence.
70. Fix to avoid an incorrect revision warning message during drawing opening.
71. Fix to retain the configured folder path for the Bar Schedule Configuration file.
72. Fix to Range Length to update while editing the Slope Length.

Version 9.11 Service Pack (Build 1713)

1. Fix for an inconsistent crash while opening CADS RC if licensed using a WAN Network dongle.

Version 9.11

1. Support for AutoCAD 2013, AutoCAD Architecture 2013, AutoCAD Civil 3D 2013, AutoCAD Map 3D 2013, AutoCAD Mechanical 2013, AutoCAD MEP 2013 and AutoCAD Structural Detailing 2013.
2. Fix to refresh the Schedule on drawing command to update all Schedules placed on the drawing when bars with the same bar mark are assigned to different Schedules.
3. Help button added to the ribbon menu by default.
4. Fix to the Drawing Audit command to add highlighted entities into the previous selection set of AutoCAD.
5. Fix to an application crash while closing multiple drawings through AutoCAD Quick View command.
6. Fix to a schedule data mismatch issue which displayed data from another drawing in certain sequences.
7. Fix to the Oversized bar end proportional to bar size feature to draw section views for straight bars.
8. Fix to AutoCAD leader (ADL) lines to avoid merging of leader lines after executing specific CADS RC detailers.
9. Fix to the Check Database routine to avoid an application crash when 'Display dimensioned sketches' configuration is switched on.
10. Fix to the Double Indicator Range to detailer bar leader inside the VPM layout in a specific sequence.

11. Fix to the Compact Bar mark feature which corrupted a drawing in a specific sequence.
12. Fix to the un-issue schedule command from Bar Schedule which triggered unhandled exception errors in a specific sequence.
13. Fix to beam link to avoid an application crash in a specific sequence.
14. Fix to bars detailed outside the plan area in specific sequences in the Stair Flight Detailer.
15. Fix to OSL bars in curved areas for a specific sequence in Area detailer.
16. New message implemented while multi editing bars with non-standard hooks.
17. New message to warn users before overwriting existing Production Output and Electronic Schedule files.

Version 9.10

1. Stock bar optimisation feature introduced to produce optimised cut patterns. This feature helps reduce scrap as well as reuse of offcut bars.
2. New feature to view offcut bars while detailing.
3. New feature to convert plines to bars, linear ranges and tapered ranges.
4. Drawing audit feature rewritten to enhance performance.
5. Additional configuration item in Schedule settings to support length units in centimetres.
6. Option to display centre to centre (c\c) value in printed reports and schedules placed on drawing.
7. New feature to wipe out CADS RC data from an AutoCAD drawing such that CADS RC drawings could be re-used as templates.
8. Additional configuration item to display oversized bar ends, bar runs and bar in sections proportional to its bar sizes.
9. Additional configuration option to specify snap setting while placing leader.
10. Additional configuration option to justify range text annotation for multiple pitch ranges.
11. Fix to the Member title dialog which displayed error messages while editing a Member title in older version drawings.
12. Fix to Tapered ranges where the abbreviated text was not displayed in the printed reports in a specific sequence.
13. Fix to the Stock bar optimiser to provide a warning message only when the bar length is more than the respective bar size and grade stock bar.
14. Fix to the multiple bar edit feature to ensure Label notes are updated when any bar parameter is updated along with the bar spacing value.
15. Fix to the pile cap detailer tool to detail pile caps with seven numbers of piles properly.
16. Fix to the View Schedule which displayed error while deleting blank lines in a specific sequence.
17. Fix to the Change range type tool in which the alternate range was detailed improperly in a specific sequence.
18. Fix to the Accessories list where the undo command created duplicate accessories lists.

19. Fix to the Beam detailer macro tool which detailed incorrectly after using “Save as v9.07 drawing...” command.
20. Fix to the Edit range dialog to avoid a crash when the number of bars is set as 1.
21. Fix to the Area detailer where changing the cover value to “0” displayed error messages.
22. Additional validation in Draw bar dialog to avoid drawing corruption when the bar mark is entered as ‘00’.
23. Fix to the Member and Release dialog to accept special characters for Member title description and Release description respectively.

Version 9.09 Service Pack (Build 1611)

1. Fix to the incorrect placement of AutoCAD dimensioned leader when the vertical text placement is aligned as ‘centred’.
2. Fix to the Ticks and tag feature in the VPM environment where the tag text got placed in the “0” layer instead of the configured layer.
3. Additional configuration items in the Tick and tags feature to use AutoCAD leader instead of the standard CADS RC Leader.
4. Additional configuration items to configure the range end marker arrows for single and double indicator ranges.
5. Feature to place bar pointers on a range line when not intersecting with the bar indicator reinstated.
6. Fix to the ASA production output file in the 64 bit version to ensure the ‘BC’ value is printed out in the correct format.

Version 9.09

1. Support for AutoCAD 2012, AutoCAD Architecture 2012, AutoCAD Civil 3D 2012, AutoCAD Map 3D 2012, AutoCAD Mechanical 2012, AutoCAD MEP 2012 and AutoCAD Structural Detailing 2012.
2. New option to save CADS RC v9.09 drawings into the CADS RC v9.04 – v9.07 format. CADS RC v9.09 drawings are compatible with the CADS RC v9.08 drawing format.
3. Bar label feature enhanced to allow all Object Snap (OSNAP) modes in use, while placing Bar Leader instead of just the ‘Nearest’ mode.
4. New feature to configure and place multiline Bar Labels.
5. Additional configuration items in the Special Bar feature to display Special Bar dialog when called from the Draw Bar dialog, to automatically assign leg dimensions when converting AutoCAD polylines into special bars and to automatically name the new Bend Type using predefined Shape Code prefix.
6. New feature to display dimensioned Shape Code diagrams in the Bar Label.
7. New feature to show Revision Cloud for only the Current Revision or for All Revisions.
8. Special Bar feature now set to automatically create a Shape Diagram sketch for a Bar Schedule on Drawing and Bar Schedule Print Reports.

9. New configuration to control the size and position of AutoCAD blocks in Bar Label format.
10. New configuration to specify offset distance when placing Bar Mark inscribed in a circle in Bar Label.
11. Option to display Bar Label notes in the Bar Schedule on Drawing and Bar Schedule Reports.
12. New feature to control Range annotation Height and Text Style.
13. Additional option to display straight Bar Marks in CADS RC standard output (CSF format) file.
14. GLO commands – “Show all Bars”, “Suppress all Bars” and “Ignore” reinstated.
15. Additional configuration option to configure End Treatment value for Coupler and Thread labels.
16. Fix to the Accessories List which caused performance issues in a specific sequence.
17. Fix to the AutoCAD leader to avoid incorrect Leader placement in a specific sequence.
18. Fix to the CADS_RC_REDRAW command which exploded Bars and Ranges in a specific sequence.
19. Fix to the Draw Bar dialog to avoid showing incorrect error messages with USSIMP.DEF settings.
20. Fix to the Over Stock Length feature to redraw Bar Labels in a specific sequence.
21. Fix to the Bar Schedule on Drawing feature to update the Member\Release description when refreshed.
22. Fix to the Bar Label configuration to report correct Bar Length, when configured.
23. Fix to the Revision Table to display the date format as configured in the operating system.
24. Fix to the display Bar Label List on Drawing when only straight bars are present in the drawing file.
25. Fix to the Bar Schedule view which failed to display certain Bar Sizes in a specific sequence.
26. Fix to the Schedule on Drawing command to avoid listing straight bars when refreshed.
27. Fix to the Member, Release, Bid Item and Bid Structure dialogs to accept special characters.
28. Fix to the Bar Schedule view & Order Materials dialog to display correct weights in a specific sequence.
29. Fix for incorrect Bar References scaling when configured to use AutoCAD Leaders.
30. Fix to the Menu Load command in certain sequences.
31. Fix to the Revision feature which sporadically corrupted revision history and also affected drawing file performance.
32. Fix to the Alternate Range which displayed the incorrect number of Alternate bars in a specific sequence while running the Check Database command.

Version 9.08 Service Pack (Build 1548)

1. Fix in the DEF file migration utility to automatically update DEF files created in earlier versions of CADS RC.

Version 9.08

1. New feature to convert a Poly line into special bars, Special Bar creator improved to allow optional hooks.
2. Option to specify Label rotation angle when drawing Bars or Ranges.
3. Bar Schedule now supports 20 numbers of user fields which can be used in the Schedule on Drawing or Printed Reports.
4. Drawing data structure restructured to improve performance while opening and saving the drawing.
5. New feature to Search bars of specific bar marks/size/bend type or bar grade in the Bar Schedule.
6. Coupler data updated as per latest available datasheets.
7. New feature to specify and apply End Treatments to bar ends and to view End Adjustment Value in the coupler dialog.
8. Highlight Bar feature improved to highlight labels along with bars.
9. Option to swap bar marks for Alternate Range from the Edit Range dialog.
10. Bars can be assigned to Bid Item and Bid Structure in addition to Release, Drawing Sheet and Member. Configuration option available to enable or disable the same.
11. New feature to provide Release Description for each Release.
12. Option to sequence Release, Bid Item, Bid Structure and Member in their respective dialog boxes.
13. Additional option to select all bars un-assigned to any Release to a valid Release. This option is available for Bid Items too.
14. Configuration option to synchronise project based Couplers, Release, Bid Item & Bid Structure from an external file.
15. Harris (*.TSV) file format in Production Output File and Electronic Schedule file is now supported.
16. Configuration option to notify when a drawing is opened or edited.
17. Critical dimension for bars now printed in specific location in ASA production output file.
18. Fix to a number of defects to ensure AutoCAD texts are scaled properly in the VPM environment.
19. Fix for Bar Reference copied with Bar and Label even if they are not selected.
20. Fix to the stretch command not working properly while stretching bar run in a specific sequence.
21. Fix to the Extract Data command which incorrectly updated the Bar Mark in a specific sequence.
22. Fix to the save command to ensure a drawing is saved with the Schedule on Drawing in a specific sequence.
23. Fix to a specific sequence in aSa Production output file to ensure Release is ordered only when the Job Number is available.
24. Fix to allow data item, Alternate Size and Material for Schedule on Drawing and Printed Reports.
25. Fix to ensure Member Description and Release Description are updated correctly in the Schedule on Drawing header.
26. Fix to ensure the file output from Free Form schedule is as per configured units.

27. Fix to ensure Number of Members is not zero in the Member dialog.
28. Fix to reinstate the Shape Code column field in Free Form view in specific sequence.
29. Fix to schedule on drawing to ensure Total Length is displayed in configured unit.
30. Fix to a specific sequence in the dynamic title blocks to ensure the Drawing Number is read correctly.

Version 9.07 Service Pack (build 1498)

1. Fix to the specific sequence of stretch command for fixed pitch ranges and multiple pitch ranges, which updated the range length with an incorrect value.
2. Fix to a specific sequence in the Match bar command which failed to update bar marks with a prefix.
3. Fix to incorrect scaling of Bar references in the VPM environment when copy pasted from another drawing.
4. Fix to the Match bar command line entry to accommodate values other than *Yes* or *No*.
5. Fix to the Extract data command which missed updating the bar mark with the correct bar diameter.
6. Fix to ensure the CADS RC Online feature looks for new updates only as per the configuration set by the user.

Version 9.07

1. Support for AutoCAD 2011 (and all verticals).
2. Support for RC Productivity Tools in 64 bit operating systems.
3. Support for importing Eurocode 2 design jobs into CADS RC.
4. Fix to the check database command which failed to identify and correct incorrect bar label.
5. Fix to the title block configuration and connecting to the website every time you open CADS RC in Windows Vista and Windows 7 machines.
6. Fix done to Mesh Calculator configuration when adding new mesh types.
7. Fix to the Radial Bar Detailer default grade type.
8. Fix to the bar schedule data error for Alternate Ranges in a specific sequence.
9. Fix to the Step Taper Range to ensure the bar data is correctly updated to the bar schedule.
10. Fix to SMSD resulting in bar schedule data mismatch in a specific sequence.
11. Fix for the stretch command not working properly for Alternate Fixed Pitch\Alternate Multiple Pitch Bar Run.
12. Fix for the range line exploding problem in a specific sequence.
13. Fix to the bar label revision cloud not appearing in a specific sequence when doing a bar edit.
14. Fix to the Split Range where the number of bars were shown as zero in a specific sequence.

15. Fix to the Add Chair feature when placing it with No Bar View option.
16. Fix for the production output files which included deleted bar information in a specific sequence.

Version 9.06

1. Support for 64 bit versions of Windows 7®, Windows Vista® and Windows XP®.
2. Support for AutoCAD 2010 installed with AutoCAD Structural Detailing Suite.
3. Improved performance to the bar schedule feature.
4. Configuration option to allow the combining of bar marks spread across different members.
5. Drawing audit feature improved to identify and highlight bars un-assigned to any drawing sheet, member or release.
6. Option to remove configured drawing sheet title blocks using the *Configure Title Block* dialog.
7. Additional check for bars un-assigned in any drawing sheet during operations such as drawing sheet issue, print report and place bar schedule on drawing.
8. Fix to Assign bars to release command to reinstate *by Member* and *by Drawing sheet* option.
9. Fix for a crash in ACAD 2010 when the purge command is used.
10. Fix for incorrect placement of Revision clouds and Call out symbols.
11. Fix for ACAD crash in Vista while opening CADS RC installed with *CADS RC Palettes pre-release*.
12. Fix to validate bar mark entry such that it does not contain any special characters.
13. Fix for the title block configuration utility which caused a delay in opening certain drawing files.

Version 9.05

1. Support for AutoCAD 2010 and all verticals (AutoCAD Architecture 2010, AutoCAD MEP 2010, AutoCAD Civil 3D 2010, AutoCAD Map 3D 2010, and AutoCAD Mechanical 2010).
2. Configuration to control offset between the revision cloud and label.
3. Configuration to place a weight summary table on a drawing for “all” or for selected Drawing sheets/Members/Releases.
4. Ability to place a schedule on a drawing even for Unassigned Drawing sheet/Member/Release.
5. Supports bar shapes with predefined couplers.
6. Configuration option extended to show Members/Releases dialog on drawing first bar in new drawing and in existing drawings.
7. Option to control “99-” character prefix to special shape code name in SteelPac electronic output file.
8. The DEF file used in the drawing is displayed in draw bar and edit bar dialogs.
9. Configuration option for tapered ranges to control the text line description and its position.
10. Fix to revision mark corruption on opening issued drawings created in previous versions.

11. Fix to edit header and footer fields to retain the entered values after saving the drawing.
12. Additional filter options in "Assign bars to release" dialog.
13. Option to assign partially un-ordered bars to selected release.
14. Configuration option for ASA output to display bar mark for straight bars.
15. Configuration option to control display of imperial dimensions less than 1' with or without leading 0' character.
16. Fix to the ASA output to remove duplicate 2R lines.
17. Fix to the RMS output to support four digits of total number of bars value.
18. Fix to the Soule output files displaying junk characters while importing.

Version 9.04

1. Support for AutoCAD Mechanical.
2. Support the display of actual dimensions on schedule diagrams.
3. Facility to edit (override) a bars revision level and page header revisions.
4. Un-combine command.
5. Configuration to control whether bar mark is reported for straight bars.
6. Partial un-order facility.
7. Ability to place multiple schedules on a drawing in one operation.
8. Enhanced highlight bar in drawing command.
9. Specify revision level for each revision type configuration option.
10. Removal of errors caused by title block fields.
11. Drawing re-use warning on Check Database command.
12. Refresh all viewports commands.
13. Additional CSF data format configuration settings.
14. Stability improvements to expand operational boundaries.
15. Additional configuration to control the presentation of shape diagrams within reports.
16. Rationalisation of coupler configurations.
17. Member and release description fields available for review from the schedule dialog.
18. Fix to incorrect revisions when stretching ranges.
19. Fixes to Steelpac output so as to make diagram identification consistent.
20. Fix to date format issues within Steelpac output.
21. Fix to rescaling of annotation on closing/saving a drawing.
22. Reduction in permissible stock lengths.
23. Weight units shown in summary tables.
24. Numerous fixes to presentation problems in Excel.

25. Fix to problem causing loss of ribbon icons following installation of AutoCAD 2009 updates.
26. Resolution to defect that causes “command in progress” errors to appear.
27. Confirmation requested on pressing cancel from Configure Title Block dialog.
28. Improved accessibility to Excel and PDF output features.
29. Restriction on use of obsolete re-sync command Selection of fixes to the RC tools including Area Detailer, Split Range, etc.
30. Batch import into CADS-BL (Beam Link).
31. Support for longer member title names.

Version 9.03

1. Support for AutoCAD 2009 (and all verticals).
2. CADS RC Ribbon offered in AutoCAD 2009, together with extended tooltips.
3. Schedule menu and toolbar replaced with ribbon panel.
4. Improved icons on all ribbons, toolbars and ribbons. Full support for the AutoCAD *Use Large Buttons for Toolbars* feature.
5. Specification of up to three separate BDF files now possible. Additional sort options allow the shapes from these files to be sorted and grouped.
6. Re-instated v8 approach to product launch from desktop icon. Support for AutoCAD parameters such as /t to load a specific DWT file now restored.
7. No need for administrator rights when installing for Windows Vista.
8. Raft of memory management improvements aimed at improving product stability.
9. Data integrity checks added to all output options.
10. Revision clouds and symbols now placed on different layers.
11. Fixed problem that prevents the double-click editing of bars when true type fonts are configured
12. Controls used for report printing updated (DevExpress v7.2).
13. Highlight bar in drawing feature now supports multiple drawing sheets.
14. Use of legacy v8 DCL files is detected and a warning supplied.
15. Save As v8.4 feature now offers advice on saving to previous DWG formats.
16. Numerous stability improvements following investigations into damaged drawings.
17. Products now grouped under “Detailing” folder within Windows Start menu.
18. Various fixes that ensure the schedule accurately reflects bars drawn via the RC tools.
19. Shape diagrams now coming through to RTF format.
20. Numerous fixes to problems related to the display of shape sketches within the schedule.
21. Fix to problem of electronic transfers files not being generated when a fixed location specified.
22. Free-form report now sorts correctly by default and formats weights as per localisation settings.
23. All printed reports converted to print to A4 instead of Letter layout.

24. Report designer now offers a field equivalent to the *Drawing Sheet Revision Mark*.
25. Now only the appropriate dimension columns are shown by default in the schedule.
26. Resolution of problems pertaining to use of the compact bars command when bars had been ordered.
27. Various fixes related to the incorrect scaling of entities by Viewport Manager.
28. User fields now shown in the header even when multiple pages are output.
29. The AutoCAD last and previous operator is being wiped by CADS RC.
30. Support for specification of a blank first revision level added.
31. Shape table scaled and formatted to match v8.
32. Revision table now adopts the date format from Windows.
33. Fix to problem whereby cell width is enlarged for schedule placed in paperspace.
34. Configuration that controls the display of run-out dimensions rectified.

Version 9.02

1. A number of key fixes have been made to resolve issues that caused either error messages on entering the schedule or for the data shown in the schedule to be out-of-step with the drawing.
2. The Check Database command has been extended to identify and correct any discrepancies between the drawing and schedule.
3. A range of performance improvements have been implemented especially in relation to prolonged periods of use with the schedule continually open.
4. Auto-combine feature added.
5. The resetting of OSNAP settings following use of CADS RC commands has been resolved.
6. New highlight bar in drawing feature added to the right click menu on the formatted view of the schedule
7. Feature to automatically migrate V8 DEF files introduced.
8. Simplification of title block (drawing sheet) configuration workflow.
9. Option to abbreviate the reporting of tapered ranges included.
10. Array of area detailer improvements including improved label placement, support for OSL ranges, and tapered range usage. (These will come through to SMSD).
11. Range of AutoCAD Dimension Leader (intelligent leader) improvements.
12. Locked lines issuing and revision setting now supports improved control over formatting.
13. Locked lines now set as the default issue and revision configuration option.
14. Improved defaulting of current drawing sheet and member throughout the program.
15. Fix to the match bar problem when bar marks exceed two characters.
16. Text font improvements related to schedule on drawing customisation.
17. Header date fields now fully editable and stay set following issue, etc.

18. Resolution of defects that result in drawing damage when saving following a close operation.
19. Removal of restrictions on saving to a previous version of AutoCAD.
20. Combined E/R column supplied in the schedule dialog.
21. Tutorial extended and quality of screen shots improved.
22. Improved alignment of program headers to standard report headers.
23. Editing of OSL bars now successfully triggers revision warning.
24. Improved locating of slide files created via the special bar creator.
25. Range of stability and usability improvements to the RC tools and detailers.
26. Substantial ranges of additional minor fixes to schedule related functionality.

Version 9.01

1. New schedule with attractive, interactive and friendly user interface (see What's New & Getting Started with V9 Guide for more information).
2. Support for Microsoft Windows Vista.
3. Support for AutoCAD 2008 (and all verticals).
4. Create multiple drawings and schedules from a single DWG file. Support for working across AutoCAD layouts, via drawing sheets.
5. Fully featured issue and revision system including automatic generation of revision clouds and tables.
6. Produce quick reports and queries using the new free-form report generator.
7. Multiple sorting and formatting options.
8. Set your company standards using the simply and concise schedule configuration.
9. Support for Autodesk Civil 3D, Autodesk Building Systems, Autodesk Map3D (2006 and above).
10. Numerous installation improvements and applications now load automatically.
11. Improved product documentation.
12. Tip-of-the-day and usage tips added.
13. Extensive improvements to the RC tools.
14. Range of CADS Viewport Manager fixes/improvements.